

Kardinia Long Short Fund

Product Disclosure Statement

ARSN 156 292 625
APIR BFL0010AU
Issue Date 13 January 2026

Contents

1. Fund at a glance	4
2. ASIC Benchmarks	5
3. ASIC disclosure principles	6
4. Who is Managing the Fund?	9
5. How the Fund invests	11
6. Managing risk	15
7. Investing and withdrawing	18
8. Keeping track of your investment	22
9. Fees and other costs	24
10. Taxation	28
11. Other important information	31
12. Glossary of important terms	34

Investment Manager

Kardinia Capital Pty Ltd
ABN 20 152 003 186
AFSL 546441
Web: www.kardinia.com.au

Administrator

Apex Fund Services (Australia) Pty Ltd
ABN 86 149 408 702 AFSL 303253
P: 1300 133 451
E: SSG@apexgroup.com

Responsible Entity

Equity Trustees Limited
ABN 46 004 031 298, AFSL 240975
GPO Box 2307
Melbourne VIC 3001
Ph: +613 8623 5000
Web: www.eqt.com.au/insto

This Product Disclosure Statement ("PDS") was issued on 13 January 2026. This PDS is for the offer of interests in the Kardinia Long Short Fund (referred throughout this PDS as the "Fund").

The PDS has been prepared and issued by Equity Trustees Limited (ABN 46 004 031 298, Australian Financial Services Licence ("AFSL") No. 240975) in its capacity as the responsible entity of the Fund (referred throughout this PDS as the "Responsible Entity", "Equity Trustees", "us" or "we"). The investment manager is Kardinia Capital Pty Ltd (ABN 20 152 003 186, AFSL 546441) (referred to throughout this PDS as the "Investment Manager" or "Kardinia").

The Responsible Entity has authorised the use of this PDS for the Fund as disclosure to investors and prospective investors of an investor directed portfolio service, master trust, wrap account or an investor directed portfolio service-like scheme ("IDPS"). This PDS is available for use by persons applying for units in the Fund through an IDPS ("Indirect Investors").

The operator of an IDPS is referred to in this PDS as the 'IDPS Operator' and the disclosure document for an IDPS is referred to as the 'IDPS Guide'. If you invest through an IDPS, your rights and liabilities will be governed by the terms and conditions of the IDPS Guide. Investors should carefully read the terms and conditions before investing in the Fund. Indirect Investors should note that you are directing the IDPS Operator to arrange for your money to be invested in the Fund on your behalf. Indirect Investors do not become unit holders in the Fund or have the rights of unit holders. The IDPS Operator becomes the unit holder in the Fund and acquires these rights.

Indirect Investors should refer to their IDPS Guide for information relating to their rights and responsibilities as an Indirect Investor, including information on any fees and charges applicable to their investment. Information regarding how Indirect Investors can apply for units in the Fund (including an application form where applicable) will also be contained in the IDPS Guide. Equity Trustees accepts no responsibility for IDPS Operators or any failure by an IDPS Operator to provide Indirect Investors with a current version of this PDS as provided by Equity Trustees or to withdraw the PDS from circulation if required by Equity Trustees.

This PDS is prepared for your general information only. It is not intended to be a recommendation by the Responsible Entity, Investment Manager, any associate, employee, agent or officer of the Responsible Entity, Investment Manager or any other person to invest in the Fund. This PDS does not take into account the investment objectives, financial situation or needs of any particular investor. You should not base your decision to invest in the Fund solely on the information in this PDS. You should consider whether the information in this PDS is appropriate for you, having regard to your objectives, financial situation and needs and you may want to seek professional financial advice before making an investment decision.

Equity Trustees, the Investment Manager and their employees, associates, agents or officers do not guarantee the success, repayment of capital or any rate of return on income or capital or the investment performance of the Fund. Past performance is no indication of future performance. An investment in the Fund does not represent a deposit with or a liability of Equity Trustees, the Investment Manager or any of their associates. An investment is subject to investment risk, including possible delays in repayment and loss of income or capital invested. Units in the Fund are offered and issued by the Responsible Entity on the terms and conditions described in this PDS (as updated or replaced from time to time). You should read this PDS in its entirety because you will become bound by it (and any updates and replacements) if you become a direct investor in the Fund.

In considering whether to invest in the Fund, investors should consider the risk factors that could affect the financial performance of the Fund. Some of the risk factors affecting the Fund are summarised in Section 6.

A Target Market Determination (TMD) has been prepared for the Fund. A copy of the TMD can be obtained free of charge upon request by contacting the Investment Manager or visiting www.kardinia.com.au. You should consider all of this information, including the TMD for the Fund before making a decision to invest in the Fund.

The offer to which this PDS relates is only available to persons receiving this PDS in Australia and New Zealand (electronically or otherwise). All references to dollars or "\$" in this PDS are to Australian dollars. New Zealand investors wishing to invest in the Fund should be aware that there may be different tax implications of investing in the Fund and should seek their own tax advice as necessary.

This PDS does not constitute a direct or indirect offer of securities in the US or to any US Person as defined in Regulation S under the US Securities Act of 1933 as amended ("US Securities Act"). Equity Trustees may vary its position and offers may be accepted on merit at Equity Trustees' discretion. The units in the Fund have not been, and will not be, registered under the US Securities Act unless otherwise determined by Equity Trustees and may not be offered or sold in the US to, or for, the account of any US Person (as defined) except in a transaction that is exempt from the registration requirements of the US Securities Act and applicable US state securities laws.

If you received this PDS electronically, you will need to print and read this document in its entirety. We will provide a paper copy free upon request during the life of this PDS. The PDS is available on www.eqtr.com.au/insto or you can request a copy free of charge by calling the Responsible Entity on +61 3 8623 5000 or Apex on +612 7201 901.

Certain information in this PDS is subject to change. We may update this information. You can obtain any updated information:

- by contacting Apex on +612 7201 9015 ; or
- by visiting the Kardinia website at www.kardinia.com.au

A paper copy of the updated information will be provided free of charge on request.

You may also contact Equity Trustees:

- by writing to GPO Box 2307 Melbourne VIC 3001; or
- by calling +613 8623 5000

Unless otherwise stated, all fees quoted in the PDS are inclusive of GST, after allowing for an estimate for Reduced Input Tax Credits ("RITC"). All amounts are in Australian dollars unless otherwise specified. All references to legislation are to Australian law unless otherwise specified.

New Zealand investors warning statement

(a) This offer to New Zealand investors is a regulated offer made under Australian and New Zealand law. In Australia, this is Chapter 8 of the Corporations Act 2001 (Aust) and regulations made under that Act. In New Zealand, this is subpart 6 of Part 9 of the Financial Markets Conduct Act 2013 and Part 9 of the Financial Markets Conduct Regulations 2014.

(b) This offer and the content of the offer document are principally governed by Australian rather than New Zealand law. In the main, the Corporations Act 2001 (Aust) and the regulations made under that Act set out how the offer must be made.

(c) There are differences in how financial products are regulated under Australian law. For example, the disclosure of fees for managed investment schemes is different under the Australian regime.

(d) The rights, remedies, and compensation arrangements available to New Zealand investors in Australian financial products may differ from the rights, remedies, and compensation arrangements for New Zealand financial products.

(e) Both the Australian and New Zealand financial markets regulators have enforcement responsibilities in relation to this offer. If you need to make a complaint about this offer, please contact the Financial Markets Authority, New Zealand (<http://www.fma.govt.nz>). The Australian and New Zealand regulators will work together to settle your complaint.

(f) The taxation treatment of Australian financial products is not the same as for New Zealand financial products.

(g) If you are uncertain about whether this investment is appropriate for you, you should seek the advice of a financial advice provider.

(h) The offer may involve a currency exchange risk. The currency for the financial products is not New Zealand dollars. The value of the financial products will go up or down according to changes in the exchange rate between that currency and New Zealand dollars. These changes may be significant.

(i) If you expect the financial products to pay any amounts in a currency that is not New Zealand dollars, you may incur significant fees in having the funds credited to a bank account in New Zealand in New Zealand dollars.

(j) The dispute resolution process described in this offer document is available only in Australia and is not available in New Zealand.

1. Fund at a glance

Feature	Summary	For further information
Name of the Fund	Kardinia Long Short Fund	Section 5
APIR Code	BFL0010AU	Section 5
ARSN	156 292 625	Section 5
Investment objective	<p>The Fund aims to achieve consistent positive returns through an investment cycle, with an overarching philosophy of capital protection.</p> <p>There is no guarantee that the Fund's investment objective will be achieved. The investment objective is not intended to be a forecast. It is merely an indication of what the Fund aims to achieve over the medium to long term. The Fund may not be successful in meeting this objective. Returns, income and capital are not guaranteed.</p>	Section 5
Fund Benchmark	There is no Fund Benchmark however the Performance Fee Hurdle is the daily RBA Official Cash Rate plus 2%.	Section 5
Investment strategy	The Fund is a long/short Australian equity product incorporating a strict framework of portfolio construction rules, exposure limits and risk management procedures as outlined in Section 5.	Section 5
The type(s) of investor(s) for whom the Fund would be suitable	The Fund is likely to be suitable for investors seeking capital growth over the longer term for a small allocation of their portfolio and those who can tolerate a high or a very high level of risk. This Fund is unlikely to be suitable for persons seeking capital preservation or capital guarantee and is unlikely to be suitable for a consumer seeking a standalone or core investment solution. This Fund is also unlikely to be suitable for a person with a low risk and return profile or with an investment timeframe of less than 5 years.	Section 5
Recommended investment timeframe	<p>Long term (five years)</p> <p>This suggested investment period may not be appropriate for you at all times or suit your particular needs. You should regularly review all aspects of your investments.</p>	Section 5
Minimum initial investment	\$20,000	Section 7
Minimum additional investment	\$10,000	Section 7
Minimum withdrawal amount	\$10,000	Section 7
Minimum balance	\$10,000	Section 7
Cut off time for applications and withdrawals	2:00 p.m. (Sydney time) on any Business Day	Section 7
Valuation frequency	The Fund's assets are generally valued daily.	Section 7
Applications	Accepted each Business Day.	Section 7
Withdrawals	Accepted each Business Day	Section 7
Income distribution	Annually	Section 7
Management fees and costs	1.99% p.a. of the Net Asset Value ("NAV") (including GST less RITCs)	Section 9
Entry fee/exit fee	Nil	Section 9
Buy/Sell spread	+/- 0.20% on applications into the Fund, and withdrawals out of the Fund.	Section 9
Performance fee	20.5% (including GST net of reduced input tax credits) of the investment returns of the Fund made in excess of the daily RBA Official Cash Rate plus 2%.	Section 9

2. ASIC Benchmarks

The Fund is a 'hedge fund' for the purposes of Australian Securities and Investments Commission ("ASIC") Regulatory Guide 240 ("RG 240"). The following table and the tables in Sections 1 and 3 set out a summary of the disclosure ASIC requires for hedge funds, the key features of the Fund and a guide to where more detailed information can be found in this PDS. A copy of RG 240 dated October 2022 (as may be amended, supplemented or replaced from time to time) is available from www.asic.gov.au.

The information summarised in the relevant tables and explained in detail in the identified section reference is intended to assist investors with analysing the risks of investing in the Fund. Investors should consider this information together with the detailed explanation of various benchmarks and principles referenced throughout this PDS and the key risks of investing in the Fund highlighted in Section 6 of this PDS.

ASIC Benchmark	Is the benchmark satisfied?	Summary	For further information
Benchmark 1: Valuation of assets			
This benchmark addresses whether valuations of the Fund's non-exchange traded assets are provided by an independent administrator or an independent valuation service provider.	Yes	Equity Trustees has appointed an independent administrator, Apex Fund Services (Australia) Pty Limited, to provide administration services for the Fund. The Fund satisfies Benchmark 1 by having its non-exchange traded assets independently valued.	Section 5
Benchmark 2: Periodic reporting			
This benchmark addresses whether the Responsible Entity of the Fund will provide periodic disclosure of certain key information specified by ASIC on an annual and monthly basis.	Yes	The Responsible Entity will provide periodic disclosure of certain key information on an annual and monthly basis.	Section 8

3. ASIC disclosure principles

	Summary	Section (for further information)
<i>Investment strategy</i>	<p>The Fund is a unit trust targeting absolute returns. In order to achieve the risk/return objectives of the Fund, a variety of strategies are employed in a portfolio of Australian and New Zealand listed equities, derivatives and cash.</p> <p>These strategies include:</p> <ul style="list-style-type: none"> • investing in a selection of long/short Australian and New Zealand listed equities, cash equivalent instruments, and exchange traded derivatives; • long investments where price is expected to rise and short investments where price is expected to fall; • managing risk by implementing gross and net exposure limits; and • imposing stop-loss limits. <p>The strategy will produce investment returns dependent on the asset allocation and investment selection skills of the investment team. The success of the Fund's investment strategy will depend on market conditions and may be influenced by specific risk factors set out in Section 6.</p> <p>The Responsible Entity may, at its discretion, alter its investment objectives and strategy. Whilst there is no intention to change the investment strategy, you will be provided with written notice of any such changes.</p>	Section 5.2
<i>Investment manager</i>	<p>Equity Trustees Limited, as Responsible Entity of the Fund, has appointed Kardinia Capital Pty Ltd as the investment manager of the Fund.</p> <p>Kristiaan Rehder and Stuart Larke are responsible for the management of Kardinia. Kristiaan Rehder and Stuart Larke are adequately qualified and experienced in the management of the Fund and dedicate their time to the implementation of the Fund's investment strategy.</p> <p>See Section 4 in relation to the expertise of the Investment Manager and the Investment Management Agreement under which the Investment Manager has been appointed.</p> <p>Under the Investment Management Agreement between the Investment Manager and Equity Trustees, Equity Trustees can terminate the Investment Manager's appointment where the Investment Manager becomes insolvent, materially breaches the agreement, ceases to carry on its business or in certain other circumstances. In the event that Equity Trustees terminates the Investment Manager following one of these events, the Investment Manager's appointment would cease upon any termination date specified in the notice, and the Investment Manager would be entitled to receive fees in accordance with the agreement until the effective date of termination.</p>	Section 4

	Summary	Section (for further information)
<i>Fund structure</i>	<p>The Fund is an Australian unit trust registered under the Corporations Act as a managed investment scheme.</p> <p>The responsible entity of the Fund is Equity Trustees. Equity Trustees may appoint service providers to assist in the ongoing operation, management and administration of the Fund.</p> <p>The key service providers to the Fund are:</p> <ul style="list-style-type: none"> • Kardinia Capital Pty Ltd, the investment manager of the Fund; • Apex Fund Services (Australia) Pty Ltd, the administrator of the assets of the Fund; <p>The Responsible Entity has also appointed the Prime Broker/Custodian to provide prime broking and custody services to the Fund.</p> <p>The Responsible Entity ensures compliance of service providers with their obligations under the relevant service agreements and applicable laws by requiring completion of monthly questionnaires and quarterly assurance certifications and by conducting an annual onsite visit. All assets are held in Australia or New Zealand.</p> <p>See Section 5.3 for further information on other key service providers, and Equity Trustees' role in monitoring the performance of service providers.</p> <p>We note that there are risks of holding assets through third party service providers such as the Prime Broker/Custodian or Cash Custodian. These risks are outlined in Section 6 'Default Risk'.</p>	Section 5.3
<i>Valuation, location and custody of assets</i>	<p>The investments of the Fund are generally valued daily by the Administrator and the Net Asset Value is established as per the Constitution of the Fund. The investments of the Fund will either be valued at the market value, a value determined from an independent source or by the Administrator in consultation with the Responsible Entity and Investment Manager and in accordance with industry standards.</p> <p>The Fund may invest in a selection of Australian and New Zealand listed equities, cash equivalent instruments and exchange traded derivatives. The Fund will only invest in listed investments on an Australian and New Zealand securities exchange or where the investment has a significant connection with Australia or New Zealand listed equity. The Fund's assets will be held in Australia or New Zealand. See 'Investment Universe' and 'Derivatives' in Section 5 for further details.</p> <p>Apex Fund Services (Australia) Pty Ltd is the administrator of the Fund and provides administrative, accounting, registry and transfer agency services. The Administrator is responsible for calculating the Net Asset Value of the Fund.</p> <p>The Prime Broker/Custodian provides prime broking services including securities settlement, lending of cash and securities, custody, and reporting.</p> <p>The Responsible Entity also performs the role of the Cash Custodian for some of the Fund's cash assets, which are held in the name of the Responsible Entity.</p> <p>See sections 4 and 5.4 for further information on the custodial arrangements and the geographical location of the Fund's assets.</p>	Sections 4 and 5.4
<i>Liquidity</i>	<p>The Responsible Entity reasonably expects that it will be able to realise at least 80% of the assets of the Fund, at the value ascribed to those assets, in calculating the Fund's Net Asset Value, within 10 days. See 'Liquidity' in Section 5.5 for further details.</p>	Section 5.5

	Summary	Section (for further information)
<i>Leverage</i>	<p>The Fund may borrow money to generate financial leverage. In addition, the Fund may become leveraged through the occasional use of derivatives (such as options) and short selling which form part of the investment strategy of the Fund.</p> <p>The maximum gross exposure limit of the Fund taking into account leverage is 200% of the Net Asset Value of the Fund (including leverage embedded in the assets of the Fund other than leverage embedded in holdings of listed equities). An example of the impact of leverage on gains and losses can be found in 'Leverage' Section 5.6.</p> <p>The Prime Broker/Custodian is the primary counter-party to any leveraged transactions (e.g. short selling or derivatives) and may hold some assets of the Fund as collateral for those transactions. The unencumbered assets are not exposed to set off rights or claims.</p>	Section 5.6
<i>Derivatives</i>	<p>Derivatives are primarily used for the purpose of hedging physical positions where required.</p> <p>They can be used to hedge overall market risk at the portfolio level or to manage individual stock risk. Derivatives can also be used to gain market exposure to underlying securities. The Fund uses exchange traded derivatives.</p> <p>The primary derivative counter-party used is the Fund's Prime Broker/Custodian. A discussion of the risks of using derivatives is included in Section 6 'The Prime Broker/Custodian' and Section 4 'Derivative Instruments Risk'. See also 'Derivatives' Section 5.7 for further details.</p>	Section 5.7
<i>Short selling</i>	<p>Short selling is undertaken by the Fund as part of the investment strategy to benefit from falling securities prices. The Fund engages in short selling by borrowing securities from the Prime Broker/Custodian and providing collateral to the Prime Broker/Custodian (see Section 4 'The Prime Broker/Custodian' for further details).</p> <p>The risks of short selling are set out in Section 6 'Short Selling Risk'. Short selling risk is managed by the Investment Manager through position size and by the use of an external Prime Broker/Custodian.</p>	Section 5.8
<i>Withdrawals</i>	<p>Daily.</p> <p>Withdrawal requests must be received by 2pm (Sydney time) on any Business Day to receive that day's unit price.</p> <p>In some circumstances, such as when the Fund is illiquid, investors will not be able to withdraw from the Fund. If the withdrawal requirements are altered you will be notified in writing.</p> <p>See Section 7 for more information on making a withdrawal.</p>	Section 7

4. Who is Managing the Fund?

The Responsible Entity

Equity Trustees Limited

Equity Trustees Limited ABN 46 004 031 298 AFSL 240975, a subsidiary of EQT Holdings Limited ABN 22 607 797 615, which is a public company listed on the Australian Securities Exchange (ASX: EQT), is the Fund's responsible entity and issuer of this PDS. Established as a trustee and executorial service provider by a special Act of the Victorian Parliament in 1888. Today, Equity Trustees is a dynamic financial services institution which continues to grow the breadth and quality of products and services on offer.

Equity Trustees' responsibilities and obligations as the Fund's responsible entity are governed by the Fund's constitution ("Constitution"), the Corporations Act and general trust law. Equity Trustees has appointed Kardinia Capital Pty Ltd (ABN 20 152 003 186, AFSL 546441) as the investment manager of the Fund. Equity Trustees has appointed a custodian to hold the assets of the Fund. The custodian has no supervisory role in relation to the operation of the Fund and is not responsible for protecting your interests.

The Investment Manager

Kardinia Capital Pty Ltd (Kardinia) is a boutique asset manager investing in Australian equities via a long/short strategy. The Fund aims to generate consistent positive returns in all market conditions with an overarching philosophy of capital protection. The strategy was inceptioned in 2006 by Kristiaan Rehder. Stuart Larke joined Kardinia Capital in 2016 and is now co-portfolio manager with Kristiaan Rehder. The Fund has more than 19 years of actual performance history.

Remember, past performance is not necessarily an indication of future performance.

Kristiaan is a Chartered Financial Analyst with over 27 years' experience in the financial services industry, having worked with Merrill Lynch in its mergers and acquisitions team in Australia, London and Singapore. Prior to that he worked for KPMG Corporate Finance advising on acquisitions and divestments. Most recently, Kristiaan was a portfolio manager at Herschel Asset Management. Kristiaan holds a Bachelor of Commerce degree from the University of Melbourne.

Stuart is a Chartered Financial Analyst with over 27 years' experience in the financial services industry, having worked as a senior investment analyst and portfolio manager at Kardinia Capital since January 2016. Roles prior to that include senior portfolio manager at Telstra Super, portfolio manager at Myer Family Company, Director in Emerging Companies research at Goldman Sachs JBWere and executive at KPMG Corporate Finance. Stuart holds a Bachelor of Laws (Honours) degree and Bachelor of Commerce degree from the University of Melbourne.

Kristiaan and Stuart devote their time to the implementation of the Fund's investment strategy and the promotion of the Fund. There have been no adverse findings against the Investment Manager and any staff involved in investment decisions.

Under the Investment Management Agreement between the Investment Manager and Equity Trustees, Equity Trustees can terminate the Investment Manager's appointment where the Investment Manager becomes insolvent, materially breaches the agreement, ceases to carry on its business or in certain other circumstances. In the event that Equity Trustees terminates the Investment Manager following one of these events, the Investment Manager's appointment would cease upon any termination date specified in the notice, and the Investment Manager would be entitled to receive fees in accordance with the agreement until the effective date of termination.

The Administrator

Apex Fund Services (Australia) Pty Ltd

The Responsible Entity has appointed Apex to act as administrator for the Fund. In this capacity, the Administrator performs all general administrative tasks for the Fund, including registry services, keeping financial books and records and calculating the Net Asset Value of the Fund.

The Responsible Entity has entered into an administration agreement with the Administrator, which governs the services that will be provided by the Administrator.

The Investment Manager may at any time, in consultation with the Responsible Entity, select any other administrator to serve as administrator to the Fund.

The Prime Broker/Custodian

The Responsible Entity has appointed the Prime Broker/Custodian as prime broker and custodian of the Fund. The Prime Broker/Custodian has no supervisory role in relation to the operation of the Fund and is not responsible for protecting your interests.

The Responsible Entity has appointed the Prime Broker/Custodian as a prime broker/custodian to provide prime broking services including securities settlement, lending of cash and securities, custody, and reporting. The Prime Broker/Custodian holds an Australian financial services licence and is regulated by the Australian Securities and Investment Commission and the Australian Securities Exchange. The Prime Broker/Custodian does not participate in, and has no responsibility for, investment decisions of the Investment Manager or the Investment Manager's activities more generally.

The Responsible Entity has granted the Prime Broker/Custodian as prime broker a security interest over the Fund's assets held with it which secures the cash and securities financing and other obligations owed by the Fund to the Prime Broker/Custodian. As prime broker, the Prime Broker/Custodian has rights to borrow and to rehypothecate the Fund's securities by way of full title transfer in accordance with the terms of the prime broker agreement. The rehypothecated securities become the property of the Prime Broker/Custodian and the Responsible Entity has a contractual claim against the Prime Broker/Custodian for the return of equivalent securities to the rehypothecated securities or their monetary value.

Securities that have not been rehypothecated are held by the Prime Broker/Custodian as custodian in trust for the Fund and in accordance with the requirements of the Corporations Act, including that client assets must be segregated from the Prime Broker/Custodian's own assets.

The Cash Custodian

The Responsible Entity also performs the role of the Cash Custodian. The services provided by the Responsible Entity as the Cash Custodian are the holding of cash accounts or term deposits on behalf of the Fund in the name of the Responsible Entity.

The fees of the Cash Custodian are payable by the Fund. In its capacity as the Cash Custodian, The Responsible Entity has no decision-making discretion relating to the investment of the assets of the Fund and makes no representation in respect of the Fund or the investment of the assets.

5. How the Fund invests

5.1 Investment Objective

The Fund aims to achieve consistent positive returns through an investment cycle, with an overarching philosophy of capital protection.

Please note that the investment objective is not intended to be a forecast. It is merely an indication of what the Fund aims to achieve over the medium to long term on the assumption that equity markets remain relatively stable throughout the investment term. The Fund may not be successful in meeting this objective. Returns, income and capital are not guaranteed

5.2. Investment Strategy

Investment Strategy

The Fund is a unit trust targeting absolute returns. In order to achieve the risk/return objectives of the Fund, a variety of strategies are employed in a portfolio of Australian and New Zealand listed equities, derivatives and cash. These strategies include:

- investing in a selection of long/short Australian and New Zealand listed equities, cash equivalent instruments, and exchange traded derivatives;
- long investments where price is expected to rise and short investments where price is expected to fall;
- managing risk by implementing gross and net exposure limits; and
- imposing stop-loss limits.

The strategy will produce investment returns dependent on the asset allocation and investment selection skills of the investment team. The success of the Fund's investment strategy will depend on market conditions and may be influenced by specific risk factors set out in Section 6.

The Responsible Entity may, at its discretion, alter its investment objectives and strategy. Whilst there is no intention to change the investment strategy, you will be provided with written notice of any such changes.

Investment Universe

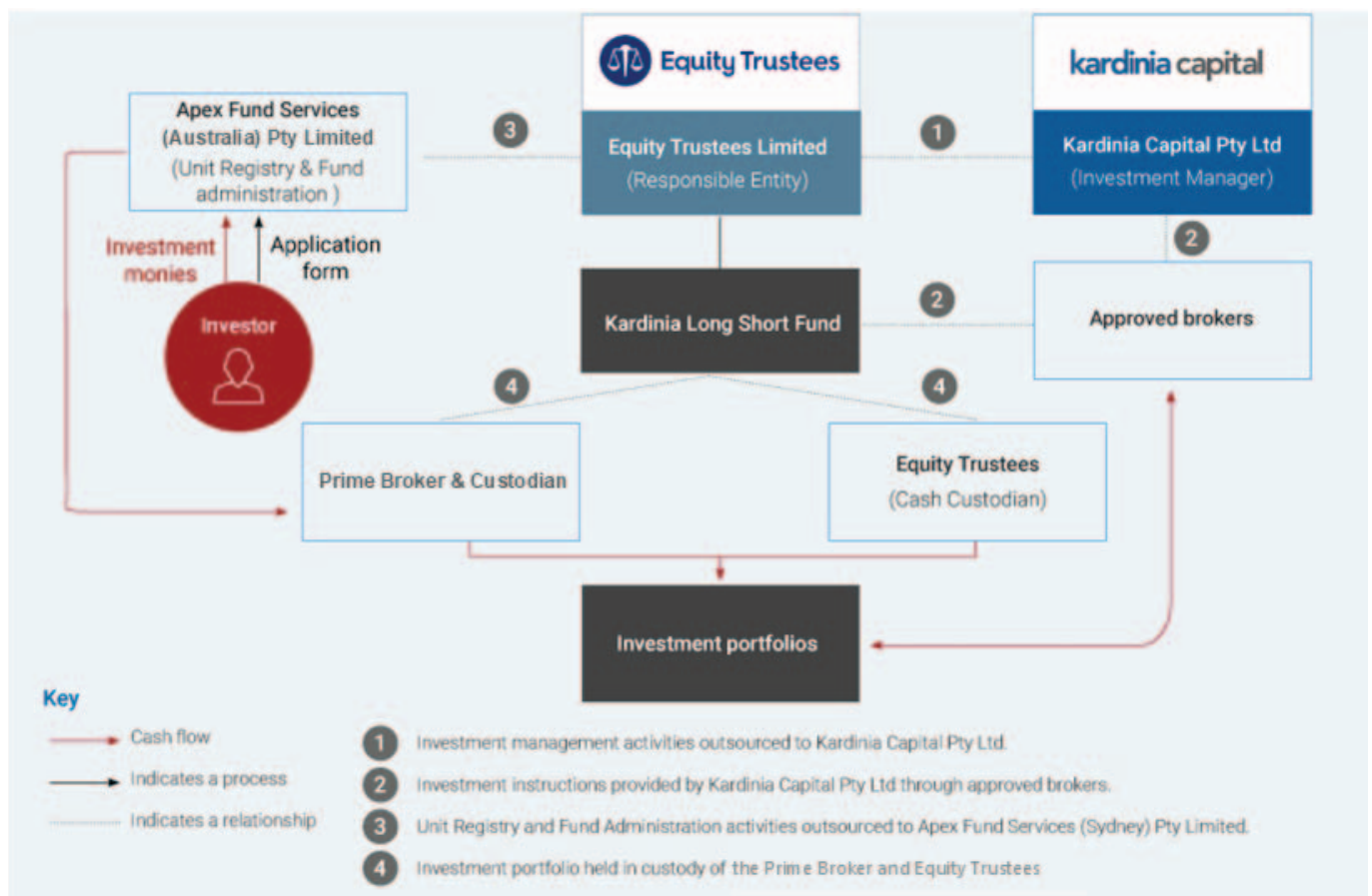
The Fund will invest primarily in listed equities and cash equivalent instruments, with exchange traded and over-the-counter derivatives used to hedge market and company specific risks, and to gain market exposure to underlying securities.

The investments that the assets of the Fund will be selected from include:

- listed equities on either an Australian or New Zealand stock exchange;
- listed equities in Australia and New Zealand through new floats, provided the Investment Manager considers the investment to be of sufficient liquidity;
- listed equities in Australia and New Zealand that are secondary issues of an existing entity, provided the Investment Manager considers those securities to be of sufficient liquidity;
- cash equivalent instruments including cash, bank bills and term deposits; and
- exchange traded derivatives, and over-the-counter derivatives limited to futures, exchange traded options, warrants, company issued or options on investments listed in the authorised investments mentioned above, as well as investments listed on US stock exchanges.

The Fund will not invest in unlisted investments (unless they are pending listing). The majority of the Fund's investments are held in Australian or New Zealand securities. The Fund may invest in listed equities on other exchanges where such investments relate to equities listed on either an Australian or New Zealand stock exchange.

5.3. Fund Structure



The Fund is an Australian unit trust registered under the Corporations Act as a managed investment scheme.

The responsible entity of the Fund is Equity Trustees. Equity Trustees may appoint service providers to assist in the ongoing operation, management and administration of the Fund.

The key service providers to the Fund are:

- Kardinia Capital Pty Ltd, the investment manager of the Fund;
- Apex Fund Services (Australia) Pty Ltd, the administrator of the assets of the Fund;
- Prime Broker/Custodian, the prime broker and custodian of the Fund;
- Equity Trustees Limited, the Cash Custodian.

The Responsible Entity ensures compliance of service providers with their obligations under the relevant service agreements and applicable laws by requiring completion of monthly questionnaires and quarterly assurance certifications and by conducting an annual onsite visit. All assets are held in Australia or New Zealand.

5.4. Valuation, location and custody of assets

Valuation

The investments of the Fund are generally priced daily by the Administrator and the Net Asset Value is established as per the Constitution of the Fund by the Administrator. The investments of the Fund will either be valued at the market value, a value determined from an independent source or by the Administrator in consultation with the Responsible Entity and Investment Manager and in accordance with industry standards.

Diversification and investment holdings

The Portfolio will typically hold between 20-75 investments. There are no allocation limits with respect to the location, class or currency of assets.

The Fund may invest in a selection of Australian and New Zealand listed equities, cash equivalent instruments and exchange traded derivatives. The Fund will only invest in listed investments on an Australian and New Zealand securities exchange or where the investment has a significant connection with Australia or New Zealand listed equity. The Fund's assets will be held in Australia or New Zealand.

Exposure Limits

The Fund will employ the following key exposure limits:

- the combined exposure of gross Long and Short Positions is 200% of the Net Asset Value of the Fund;
- the net exposure to equities is unlikely to exceed 150% of the Net Asset Value of the Fund; and
- maximum exposure to any single equity investment is unlikely to exceed 10% of the Net Asset Value of the Fund.

The Investment Manager may from time to time, due to market movements or other reasons, temporarily exceed one or more of the exposure limits of the Fund. If this occurs the Manager will act promptly to adjust exposures within the Portfolio where possible.

Custody of assets

The Prime Broker/Custodian provides prime broking services including securities settlement, lending of cash and securities, custody, and reporting. The Responsible Entity also performs the role as the Cash Custodian for some of the Fund's cash assets, which are held in the name of the Responsible Entity.

Below is a table summarising the Fund's assets, location of assets and custody arrangements:

Assets	Location of assets	Custody	Administration services
Australian and New Zealand listed equities	Generally Australia and New Zealand	Prime Broker/Custodian	Apex Fund Services (Australia) Pty Ltd
Cash and cash equivalents	Generally Australia and New Zealand	Prime Broker/Custodian Cash Custodian	Apex Fund Services (Australia) Pty Ltd

5.5. Liquidity

The Responsible Entity reasonably expects that it will be able to realise at least 80% of the assets of the Fund, at the value ascribed to those assets, in calculating the Fund's Net Asset Value, within 10 days.

The Fund will invest primarily in listed equities, derivatives and cash equivalent instruments issued by top tier Australian banks.

5.6. Leverage

The investment strategy may borrow money to generate financial leverage.

In addition, the Fund may become leveraged through the occasional use of derivatives (such as options) and short selling which form part of the investment strategy of the Fund. The primary derivative and short selling counterparty used is the Prime Broker.

The maximum gross exposure limit of the Fund taking into account leverage is 200% of the Net Asset Value of the Fund (including leverage embedded in the assets of the Fund other than leverage embedded in holdings of listed equities). This means that, compared with an unleveraged fund, assuming that the Fund reaches its maximum gross exposure of 200% of Net Asset Value, then:

- a 1% increase in the return on assets of the Fund will result in a 2.0% increase in return to investors; and
- a 1% decrease in the return on assets of the Fund will result in a 2.0% decrease in returns to investors.

In that situation for every \$1.00 of the Fund's Net Asset Value, the Fund will be leveraged by a further \$1.00 (for a total of \$2.00).

Please note that the above examples have been provided for reference purposes only. Any assumptions underlying these examples are hypothetical only.

Encumbered assets including equities or cash, plus a margin, are held as security against the value of the stock borrowed for Short Positions. All equities sitting in the encumbered portfolio account are subject to a security interest.

5.7. Derivatives

Derivatives are primarily used for the purpose of hedging physical positions where required. They can be used to hedge overall market risk at the portfolio level or to manage individual stock risk. Derivatives can also be used to gain market exposure to underlying securities.

The majority of the derivatives activity relates to efficient portfolio management, which enables the portfolio managers to gain access to particular markets more quickly or cheaply using derivatives than through the underlying instruments.

The types of derivatives are exchange traded derivatives and over-the-counter derivatives limited to futures, exchange traded options, warrants, company issued or options on securities listed in the authorised investments mentioned above, as well as investments listed on US stock exchanges.

The primary derivative counterparty used is the Fund's Prime Broker/Custodian. A discussion of the risks of using derivatives is included in Section 6 'Derivative Instruments Risk'.

The Fund is permitted to trade in exchange traded derivatives.

5.8. Short Selling

Short selling is undertaken by the Fund as part of the investment strategy to benefit from falling securities prices. The Fund engages in short selling by borrowing securities from the Prime Broker and providing collateral to the Prime Broker/Custodian (see Section 2 'The Prime Broker/Custodian' for further details).

The risks of short selling are set out in Section 6 'Short Selling Risk'. Short selling risk is managed by the Investment Manager through position size and by the use of an external Prime Broker/Custodian.

5.9. Withdrawals

The Fund processes withdrawals on a daily basis. Daily withdrawal requests are required to be received by the Administrator by 2.00 p.m. Sydney time on any Business Day.

The process for making withdrawals and limitations in relation to withdrawals is set out in Section 7. In some circumstances, such as when the Fund is illiquid, investors will not be able to withdraw from the Fund. If the withdrawal requirements are altered, you will be notified in writing.

5.10. Suggested investment timeframe

Long term (five years)

5.11. Labour standards and environmental, social and ethical considerations

The Fund is not designed for investors who have specific environmental, social and governance ("ESG") considerations or goals. The integration of ESG considerations into the investment process in the Fund described below does not imply that the Fund is marketed or authorised as an ESG product in Australia.

The Responsible Entity has delegated the investment function (including ESG responsibilities) to the Investment Manager and the Investment Manager may take into account labour standards and environmental, social and ethical considerations when selecting, retaining or realising the investments of the Fund, but only to the extent these issues have a material impact on either investment risk or return recognising that ESG issues may affect the value of investments managed on behalf of investors.

The Responsible Entity and the Investment Manager assess and manage foreseeable and potentially material risk factors and, in this context, the Responsible Entity and the Investment Manager consider ESG as a risk factor in the overall risk/reward assessment of an investment.

The Investment Manager does not apply any specific weighting system to ESG standards or considerations. However, the Investment Manager does aim to screen out companies directly exposed to tobacco, pornography and controversial weapons. It also aims to limit exposure based on business activity/operation to alcohol (maximum 5% of portfolio), gambling (maximum 10% of portfolio) and thermal coal (maximum 5% of portfolio).

The Investment Manager uses data from their ESG data provider and other sources to assist in the assessment and monitoring of the ESG qualities of existing and potential investments.

There is a risk that relevant information is not publicly available and that the exclusionary processes adopted may not operate as fully intended, and therefore some of the companies within the portfolio may not necessarily meet all of the ESG requirements at all times. If an existing holding of the Fund is identified as falling within this category, or acquires another business so that the holdings primary business now falls within this category and it is publicly reported as doing so, the Investment Manager will seek to exit this position in the Fund in an orderly manner having regard to the financial interests of the Fund. Where the Investment Manager chooses to divest due to ESG considerations, it may do so within a timeframe it considers reasonable in all the circumstances.

The Investment Manager's Responsible Investment Policy is reviewed annually and is available at www.kardinia.com.au.

5.12. Fund performance

The Fund is a registered managed investment scheme. Investors' funds are pooled and managed in accordance with a set objective and strategy. When you invest in the Fund, you acquire Units. Each Unit entitles the Unitholder (i.e. investor) to a proportionate beneficial interest in the Fund's portfolio of assets, but not to any particular asset of the Fund.

The potential for financial gain is made through investors receiving distributions and any increase in capital value of their Units (if the Unit price is higher than the price at which the investor purchased them).

5.13. Significant benefits of investing in the Fund

Investing in a managed investment scheme can offer a number of benefits, including:

- increased purchasing power – the size of a managed investment scheme means it can generally buy and sell assets at a lower cost than an individual investing directly;
- investment opportunities – managed investment schemes give you the opportunity to access a range of assets that you may not normally access as an individual investor; and
- professional investment management – your money is managed by a team of professionals who use their resources, experience and specialist skills to make the investment decisions on behalf of all investors in the Fund.

Most managed investment schemes are structured so that you buy Units in the fund. The number of Units in the Fund you will receive is dependent on the amount of money invested and the Unit price at the date of application.

The value of your investment is calculated by multiplying the number of Units you hold in the Fund by the applicable Unit price for the Fund at that time (see page 20, 'Valuation of the Fund').

6. Managing risk

All investments carry risks. Different investment strategies may carry different levels of risk, depending on the assets acquired under the strategy. Assets with the highest long-term returns may also carry the highest level of short-term risk. The significant risks below should be considered in light of your risk profile when deciding whether to invest in the Fund. Your risk profile will vary depending on a range of factors, including your age, the investment time frame (how long you wish to invest for), your other investments or assets and your risk tolerance.

The Responsible Entity and the Investment Manager do not guarantee the liquidity of the Fund's investments, repayment of capital or any rate of return or the Fund's investment performance. The value of the Fund's investments will vary. Returns are not guaranteed, and you may lose money by investing in the Fund. The level of returns will vary and future returns may differ from past returns. Laws affecting managed investment schemes may change in the future. The structure and administration of the Fund is also subject to change.

In addition, we do not offer advice that takes into account your personal financial situation, including advice about whether the Fund is suitable for your circumstances. If you require personal financial or taxation advice, you should contact a licensed financial adviser and/or taxation adviser.

Key Risks

Market risk

Broad market risks include movements in domestic and international securities markets, movements in foreign exchange rates, movements in interest rates, changes in taxation laws and other laws affecting investments and their value.

Investment Strategy risk

In addition to the core strategy of the purchase of and short sale of securities, the Investment Manager will use a range of investment strategies which may include purchase of dual listed securities and the use of derivatives. These techniques and strategies entail specific stock, interest rate, counter-party and foreign exchange risk which may magnify the negative impact of returns.

Investment in a managed fund carries the risks that the investment manager's strategies might not be successful, that the investment manager does not have the competence to manage the strategies and investments, and that the investment manager may not always act in the best interests of the Fund.

Past performance is not a reliable indicator of future performance.

Significant risks of investing in the Fund

There are a number of significant risks you should consider prior to investing in the Fund.

The following risks should be carefully evaluated before making an investment in the Fund. Consideration must also be given to the speculative nature of the Fund's investments. Please note that the following is not an exhaustive list of the risks of investing in the Fund.

Currency risk

Returns on certain investments held by the Fund may be influenced by movements in currency and carry foreign exchange risk, either because the investments held may be denominated in another currency, investments denominated in another currency may be hedged back to Australian dollars or individual company earnings may be leveraged into another currency.

Short Selling risk

Selling securities short involves borrowing securities and selling these borrowed securities. Short selling is subject to the theoretically unlimited risk of loss because there is no limit on how much the price of a security may appreciate. Additionally, there is a risk that the securities lender may request return of the securities. These risks give rise to the possibility that positions may have to be liquidated at a loss and not at a time of the Investment Manager's choosing.

Interest Rate risk

Interest rate movements may adversely affect the value of the Fund through their effect on the price of a security and the cost of borrowing.

Derivative Instruments risk

The Fund may use exchange traded derivatives which may be volatile and speculative. Use of derivative instruments involves various risks such as tracking, liquidity and leverage.

Collateral risk

If the Fund enters into a derivatives arrangement that requires it to deliver collateral or other credit support to the Derivatives counterparty, the Fund will be exposed to the following additional risks in respect of that collateral. The Fund:

- may be required to post upfront margin/collateral with the Derivatives counterparty (whether cash or other securities). The Fund will need to have sufficient liquid assets to satisfy this obligation;
- may, from time to time if the value of the derivatives arrangements moves against it, be required to post additional margin/collateral with the Derivatives counterparty on an ongoing basis. The Fund will need to have sufficient liquid assets to satisfy such calls, and in the event it fails to do so, the Derivatives counterparty may have the right to terminate such Derivatives arrangements; and
- will be subject to credit risk on the counterparty. In the event the derivatives counterparty becomes insolvent at a time it holds margin/collateral posted with it by the Fund, the Fund will be an unsecured creditor of the Derivatives counterparty and will rank behind other preferred creditors such as secured creditors and other creditors mandatorily preferred by law (for example, employees).

Leverage Risk

The Fund may use leverage by borrowing cash and offering securities as collateral, as well as utilising the cash generated from a short securities sale to purchase additional securities to extend long positions. The purchase of the additional securities has the effect of leveraging the Fund's investment return and carries the associated risk of magnifying the volatility of investment gains or losses on the capital invested. In addition, the assets of the Fund may be used as collateral for leveraged transactions and may become the subject of claims by the Prime Broker/Custodian in the event of insolvency, the failure by the Fund to comply with its repayment obligations, or other events of default. The Investment Manager intends to limit this risk through adherence to its investment process and investment guidelines.

Default risk

Investment in securities and financial instruments generally involves third parties as custodial and counterparties to contracts. Use of third parties carries risk of default and failure to secure custody which could adversely affect the value of the Fund.

The Responsible Entity outsources key operational functions including investment management, custody, execution, administration and valuation to a number of third-party service providers. There is a risk that third party service providers may intentionally or unintentionally breach their obligations to the Fund or provide services below standards which are expected by the Responsible Entity causing loss to the Fund.

Compensation fee structure risk

The Investment Manager may receive compensation based on the Fund's performance. Performance Fee arrangements may create an incentive for the Investment Manager to make more speculative or higher risk investments than might otherwise be the case.

Regulatory risk

All investments carry the risk that their value may be affected by changes in laws especially taxation laws.

Concentration risk

The Fund's typical portfolio holdings of 20 to 75 investments represents high investment concentration. The lower the number of investments, the higher the concentration and, in turn, the higher the potential volatility.

Force Majeure risks

Circumstances beyond our reasonable control may impact the operation, administration and performance of the Fund. Those include industrial disputes, failure of a securities exchange, fires, floods, hurricanes, earthquakes, wars, strikes and acts of terrorism, governmental pre-emption in connection with an emergency of state and pandemics.

Investment Manager risk

There are risks associated with the operational and financial performance of the Investment Manager, the investment strategy adopted by the Investment Manager (including ESG considerations) may not work always as intended, and the Investment Manager could be replaced. In addition, key professionals could change affecting how the Fund is managed.

Liquidity risk

Securities in which the Fund is invested, or the Fund itself, may become illiquid. The Investment Manager has attempted to mitigate this risk by ensuring sufficient cash exposure to meet liquidity requirements. There may be times when there may be a limited secondary market for the securities in which the Fund may invest and that may affect the ability of the Fund to realise investments or to meet withdrawal requests (e.g. in a falling market where companies may become less liquid). Smaller capitalisation companies tend to be less liquid than larger capitalisation companies. Where the liquidity of a particular market or security is restricted, it can affect the performance of the Fund. Lack of liquidity or market depth can affect the valuation of the Fund's assets as it looks to realise securities at quoted prices and the ability of the Fund to exit a position in a timely manner. Note that neither Equity Trustees nor the Investment Manager guarantees the liquidity of the Fund's investments or of investments in the Fund.

Pricing risk

While assets in the Fund are priced using independent pricing sources, there may be circumstances in which it is difficult for the fair value of assets to be determined, for example, where the Fund holds listed securities that have been suspended from trading, or other assets that are not regularly or easily traded. In these circumstances, there is a risk that the valuation of the security or asset may not accurately reflect its true value or what could be realised in an orderly sale of that security or asset.

Potential conflicts of interest risk

The Investment Manager may be the investment manager of other funds not described in this PDS and entities within the Equity Trustees group (comprising the Responsible Entity and its subsidiaries) may act in various capacities (such as responsible entity, trustee and custodian) for other funds or accounts. The Investment Manager and Responsible Entity have implemented policies and procedures to identify and manage the conflict.

Counterparty Risk

Returns may be affected if counterparties experience financial difficulty, fail to perform their services or meet their obligations in the manner anticipated by the Fund.

Cyber security risk

Unitholder details as well as the Fund's holdings are held electronically. There is a risk of financial loss, disruption or damage from either internal or external, accidental or malicious conduct targeting either the Investment Manager or any of its agents or service providers resulting in unauthorised access to digital systems, networks or devices for the purposes of misappropriating assets or sensitive information, corrupting data, or causing operational disruption.

Pandemic and other unforeseen event risk

Health crises, such as pandemic and epidemic diseases, as well as other catastrophes that interrupt the expected course of events, such as natural disasters, war or civil disturbance, acts of terrorism, power outages and other unforeseeable and external events, and the public response to or fear of such diseases or events, have and may in the future have an adverse effect on the economies and financial markets either in specific countries or worldwide and consequently on the value of the Fund's investments. Further, under such circumstances the operations, including functions such as trading and valuation, of the Investment Manager, Responsible Entity and other service providers could be reduced, delayed, suspended or otherwise disrupted.

7. Investing and withdrawing

Applying for units

You can acquire units by completing the Application Form that accompanies this PDS. The minimum initial investment amount for the Fund is \$20,000.

Completed Application Forms should be sent along with your identification documents (if applicable) to:

Apex Fund Services (Australia) Pty Ltd
Client Services Registry Team
PO Box 189, Flinders Lane
Melbourne VIC 8009

Please note that cash cannot be accepted.

Indirect Investors should use the Application Form attached to their IDPS Guide (not the Application Form accompanying this PDS) to invest in the Fund. You will need to contact your IDPS Operator regarding the cut-off times for pricing purposes and the minimum investment amount.

Investors investing in the Fund indirectly via an IDPS do not themselves become investors in the Fund, and accordingly have no rights as a Unitholder. The offer document for your IDPS should have further details.

If you are an indirect investor, generally the relevant IDPS operator acquires the rights of a Unitholder.

Unitholder rights include the right to attend Unitholder meetings, to make withdrawal requests, receive and reinvest distributions and participate in termination proceeds. Your rights and liabilities will be governed by the terms and conditions of the relevant IDPS, which you should read carefully prior to directing the relevant operator to invest in the Fund. Investors investing in the Fund indirectly via an IDPS are entitled to rely upon the complaint resolution procedures set out in section 10.

Indirect investors complete application forms for the IDPS, not the Fund, and receive reports from their IDPS operator, not BFM. Enquiries should be directed to that IDPS operator.

Minimum investment and withdrawal requirements may not always be relevant to indirect investors because the IDPS operator may invest on behalf of a number of indirect investors. Indirect investors will also incur fees and expenses applicable to the IDPS, as well as the Fund's fees and expenses. The tax information in this PDS does not specifically cater for indirect investors.

We reserve the right to accept or reject applications in whole or in part at our discretion. We have the discretion to delay processing applications where we believe this to be in the best interest of the Fund's investors.

The price at which units are acquired is determined in accordance with the Constitution ("Application Price"). The Application Price on a Business Day is, in general terms, equal to the Net Asset Value ("NAV") of the Fund, divided by the number of units on issue and adjusted for transaction costs ("Buy Spread"). At the date of this PDS, the Buy Spread is 0.20%.

The Application Price will vary as the market value of assets in the Fund rises or falls.

Application cut-off times

If we receive a correctly completed application form, identification documents (if applicable) and cleared application money:

- before or at 2pm (Sydney time) on a Business Day and your application for units is accepted, you will receive the Application Price calculated for that Business Day; or
- after 2pm (Sydney time) on a Business Day and your application for units is accepted, you will receive the Application Price calculated for the next Business Day.

We will only start processing an application if:

- we consider that you have correctly completed the application form;
- you have provided us with the relevant identification documents if required; and
- we have received the application money (in cleared funds) stated in your application form.

We reserve the right to accept or reject applications in whole or in part at our discretion. We have the discretion to delay processing applications where we believe this to be in the best interest of the Fund's investors.

Additional applications

You can make additional investments into the Fund at any time by sending us your additional investment amount together with a completed Application Form. The minimum additional investment into the Fund is \$10,000.

Terms and conditions for applications

Applications can be made at any time. Application cut-off times and unit pricing are set out in the initial applications section above.

Please note that we do not pay interest on application monies (any interest is credited to the Fund).

Equity Trustees reserves the right to refuse any application without giving a reason. If for any reason Equity Trustees refuses or is unable to process your application to invest in the Fund, Equity Trustees will return your application money to you, subject to regulatory considerations, less any taxes or bank fees in connection with the application. You will not be entitled to any interest on your application money in this circumstance.

Under the Anti-Money Laundering and Counter-Terrorism Financing Act 2006, applications made without providing all the information and supporting identification documentation requested on the Application Form cannot be processed until all the necessary information has been provided. As a result, delays in processing your application may occur.

Cooling off period

If you are a Retail Client who has invested directly in the Fund, you may have a right to a 'cooling off' period in relation to your investment in the Fund for 14 days from the earlier of:

- confirmation of the investment being received; and
- the end of the fifth business day after the units are issued.

A Retail Client may exercise this right by notifying Equity Trustees in writing. A Retail Client is entitled to a refund of their investment adjusted for any increase or decrease in the relevant Application Price between the time we process your application and the time we receive the notification from you, as well as any other tax and other reasonable administrative expenses and transaction costs associated with the acquisition and termination of the investment.

The right of a Retail Client to cool off does not apply in certain limited situations, such as if the issue is made under a distribution reinvestment plan, switching facility or represents additional contributions required under an existing agreement. Also, the right to cool off does not apply to you if you choose to exercise your rights or powers as a unit holder in the Fund during the 14- day period. This could include selling part of your investment or switching it to another product.

Indirect Investors should seek advice from their IDPS Operator as to whether cooling off rights apply to an investment in the Trust by the IDPS. The right to cool off in relation to the Trust is not directly available to an Indirect Investor. This is because an Indirect Investor does not acquire the rights of a unit holder in the Trust except in relation to access to Equity Trustee's complaints resolution process (see Section 8). Rather, an Indirect Investor directs the IDPS Operator to arrange for their monies to be invested in the Trust on their behalf. The terms and conditions of the IDPS Guide or similar type document will govern an Indirect Investor's investment in relation to the Trust and any rights an Indirect Investor may have in this regard.

Making a withdrawal

Investors in the Fund can generally withdraw their investment by completing a written request to withdraw from the Fund and mailing it to:

Apex Fund Services (Australia) Pty Ltd
Client Services Registry Team
PO Box 189, Flinders Lane
Melbourne VIC 8009

or sending it by fax to +61 2 9251 3525

or emailing the request to SSG.AUS@apexfs.com (Please insert the Fund name in the subject line)

The minimum withdrawal amount is \$10,000. Once we receive your withdrawal request, we may act on your instruction without further enquiry if the instruction bears your account number or investor details and your (apparent) signature(s), or your authorised signatory's (apparent) signature(s).

Equity Trustees will generally allow an investor to access their investment within 14 days of receipt of a withdrawal request by transferring the withdrawal proceeds to such investors' nominated bank account. However, the Constitution allows Equity Trustees to reject withdrawal requests and also to make payment up to 30 days after receipt of a request (which may be extended in certain circumstances).

The price at which units are withdrawn is determined in accordance with the Constitution ("Withdrawal Price"). The Withdrawal Price on a Business Day is, in general terms, equal to the NAV of the Fund, divided by the number of units on issue and adjusted for transaction costs ("Sell Spread"). At the date of this PDS, the Sell Spread is 0.20%. The Withdrawal Price will vary as the market value of assets in the Fund rises or falls.

Equity Trustees reserves the right to fully redeem your investment if your investment balance in the Fund falls below \$10,000 as a result of processing your withdrawal request. Equity Trustees can deny a withdrawal request or suspend consideration of a withdrawal request in certain circumstances, including where accepting the request is not in the best interests of investors in the Fund or where the Fund is not liquid (as defined in the Corporations Act). When the Fund is not liquid, an investor can only withdraw when Equity Trustees makes a withdrawal offer to investors in accordance with the Corporations Act. Equity Trustees is not obliged to make such offers.

If you are an Indirect Investor, you need to provide your withdrawal request directly to your IDPS Operator. The time to process a withdrawal request will depend on the particular IDPS Operator and the terms of the IDPS.

Withdrawal cut-off times

If we receive a withdrawal request:

- before 2pm (Sydney time) on a Business Day and your withdrawal request is accepted, you will receive the Withdrawal Price calculated for that Business Day; or
- on or after 2pm (Sydney time) on a Business Day and your withdrawal request is accepted, you will receive the Withdrawal Price calculated for the next Business Day. or emailing the request to SSG.AUS@apexfs.com (Please insert the Fund name in the subject line)

We reserve the right to accept or reject withdrawal requests in whole or in part at our discretion. We have the discretion to delay processing withdrawal requests where we believe this to be in the best interest of the Fund's investors.

Access to funds

Except where the Fund is not liquid (see below), the Responsible Entity will generally allow investors to access their funds within 14 Business Days of receipt of a Redemption Request Form for the relevant amount.

However, the Constitution of the Fund allows the Responsible Entity to make payment up to 30 days after receipt of a Redemption Request Form, and this period can be extended at the discretion of Equity Trustees in accordance with the Constitution.

The Responsible Entity reserves the right to postpone the processing and payment of withdrawals for the Fund subject to the above extensions of time.

Where the Fund is not liquid (as defined in the Corporations Act) an investor does not have a right to withdraw from the Fund and can only withdraw where the Responsible Entity makes a withdrawal offer to investors in accordance with the Corporations Act. The Responsible Entity is not obliged to make such offers. The Fund will cease to be liquid if less than 80% of its assets are liquid assets. Broadly, liquid assets are money in an account or on deposit with a financial institution, bank accepted bills, marketable securities, other prescribed property and other assets that the Responsible Entity reasonably expects can be realised for their market value within the period specified in the Constitution for satisfying withdrawal requests while the Fund is liquid.

Terms and conditions for withdrawals

The minimum withdrawal amount in the Fund is \$10,000. Where a withdrawal request takes the balance below the minimum level of \$10,000, the Responsible Entity may require you to redeem the remaining balance of your investment. Equity Trustees has the right to change the minimum holding amount.

The Responsible Entity can deny a withdrawal request in whole or in part. Equity Trustees will refuse to comply with any withdrawal request if the requesting party does not satisfactorily identify themselves as the investor. Withdrawal payments will not be made to third parties (including authorised nominees), and will only be paid directly to the investor's bank account held in the name of the investor at a branch of an Australian domiciled bank. By lodging a facsimile or email withdrawal request the investor releases, discharges and agrees to indemnify Equity Trustees from and against any and all losses, liabilities, actions, proceedings, account claims and demands arising from any facsimile or email withdrawal request.

You also agree that any payment made in accordance with the fax or email instructions shall be in complete satisfaction of the obligations of Equity Trustees, notwithstanding any fact or circumstance including that the payment was made without your knowledge or authority.

When you are withdrawing, you should take note of the following:

- We are not responsible or liable if you do not receive, or are late in receiving, any withdrawal money that is paid according to your instructions.
- We may contact you to check your details before processing your Redemption Request Form. This may cause a delay in finalising payment of your withdrawal money. No interest is payable for any delay in finalising payment of your withdrawal money.
- If we cannot satisfactorily identify you as the withdrawing investor, we may refuse or reject your withdrawal request or payment of your withdrawal proceeds will be delayed. We are not responsible for any loss you consequently suffer.
- As an investor who is withdrawing, you agree that any payment made according to instructions received by post, courier, fax or email, shall be a complete satisfaction of our obligations, despite any fact or circumstances such as the payment being made without your knowledge or authority.

You agree that if the payment is made according to all the terms and conditions for withdrawals set out in this PDS, you and any person claiming through or under you, shall have no claim against Equity Trustees or the Investment Manager in relation to the payment. Investors will be notified of any material change to their withdrawal rights (such as any suspension of their withdrawal rights) in writing.

Distributions

An investor's share of any distributable income is calculated in accordance with the Constitution and is generally based on the number of units held by the investor at the end of the distribution period.

The Fund usually distributes income annually. Distributions are calculated effective the last day of the distribution period and are normally paid to investors as soon as practicable after the distribution calculation date.

Investors in the Fund can indicate a preference to have their distribution:

- reinvested back into the Fund; or
- directly credited to their Australian domiciled bank account.

Investors who do not indicate a preference will have their distributions automatically reinvested. Applications for reinvestment will be taken to be received immediately prior to the next Business Day after the relevant distribution period. There is no Buy Spread on distributions that are reinvested.

In some circumstances, the Constitution may allow for an investor's withdrawal proceeds to be taken to include a component of distributable income.

Indirect Investors should review their IDPS Guide for information on how and when they receive any income distribution.

New Zealand investors can only have their distribution paid in cash if an AUD Australian domiciled bank account is provided, otherwise it must be reinvested.

When the distribution is reinvested, investors will be allotted units in accordance with the terms and conditions set out in this PDS.

The distribution reinvestment plan is offered to New Zealand investors on the following basis:

- At the time the price of units allotted pursuant to the distribution reinvestment plan is set, Equity Trustees will not have any information that is not publicly available that would, or would be likely to, have a material adverse effect on the realisable price of the units if the information were publicly available.
- The right to acquire, or require Equity Trustees to issue, units will be offered to all investors of the same class, other than those resident outside New Zealand or Australia who are excluded so as to avoid breaching overseas laws.
- Units will be issued on the terms disclosed to you, and will be subject to the same rights as units issued to all investors of the same class as you.

There is available from Equity Trustees, on request and free of charge, a copy of the most recent annual report (if any) of the Fund, the most recent financial statements (if any) of the Fund, the auditor's report on those financial statements, the PDS and the Constitution for the Fund (including any amendments). Other than the Constitution, these documents may be obtained electronically from www.kardinia.com.au.

Valuation of the Fund

The value of the investments of the Fund is generally determined daily. The value of a unit is determined by the Net Asset Value (NAV). This is calculated by deducting from the gross value of the Fund assets the value of the liabilities of the Fund (not including any unitholder liability). Generally, investments will be valued on each Business Day at their market value but other valuation methods and policies may be applied by Equity Trustees if appropriate or if otherwise required by law or applicable accounting standards. The Application Price of a unit in the Fund is based on the NAV divided by the number of units on issue. The Responsible Entity can also make an allowance for transaction costs required for buying investments when an investor acquires units; this is known as the Buy Spread.

The Withdrawal Price of a unit in the Fund is based on the NAV divided by the number of units on issue. The Responsible Entity can also make an allowance for transaction costs required for selling investments when an investor makes a withdrawal; this is known as the Sell Spread.

The Buy/Sell Spread can be altered by the Responsible Entity at any time and www.eqt.com.au/insto will be updated as soon as practicable to reflect any change.

Refer to Section 9 for additional information.

Joint account operation

For joint accounts, each signatory must sign withdrawal requests. Please ensure both signatories sign the declaration in the Application Form. Joint accounts will be held as joint tenants.

Authorised signatories

You can appoint a person, partnership or company as your authorised signatory. To do so, please nominate them on the initial Application Form and have them sign the relevant sections. If a company is appointed, the powers extend to any director and officer of the company. If a partnership is appointed, the powers extend to all partners. Such appointments will only be cancelled or changed once we receive written instructions from you to do so.

Once appointed, your authorised signatory has full access to operate your investment account for and on your behalf. This includes the following:

- making additional investments;
- requesting income distribution instructions to be changed;
- withdrawing all or part of your investment;
- changing bank account details;
- enquiring and obtaining copies of the status of your investment; and
- having online account access to your investment.

If you do appoint an authorised signatory:

- you are bound by their acts;
- you release, discharge and indemnify us from and against any losses, liabilities, actions, proceedings, account claims and demands arising from instructions received from your authorised representatives; and
- you agree that any instructions received from your authorised representative shall be complete satisfaction of our obligations, even if the instructions were made without your knowledge or authority.

Electronic instructions

If an investor instructs Equity Trustees by electronic means, such as fax or email, the investor releases Equity Trustees from and indemnifies Equity Trustees against, all losses and liabilities arising from any payment or action Equity Trustees makes based on any instruction (even if not genuine) that Equity Trustees receives by an electronic communication bearing the investor's investor code and which appears to indicate to Equity Trustees that the communication has been provided by the investor e.g. a signature which is apparently the investor's and that of an authorised signatory for the investment or an email address which is apparently the investor's. The investor also agrees that neither they nor anyone claiming through them has any claim against Equity Trustees or the Fund in relation to such payments or actions. There is a risk that a fraudulent withdrawal request can be made by someone who has access to an investor's investor code and a copy of their signature or email address. Please take care.

8. Keeping track of your investment

Complaints resolution

Equity Trustees has an established complaints handling process and is committed to properly considering and resolving all complaints. If you have a complaint about your investment, please contact us on:

Phone: 1300 133 472
Post: Equity Trustees Limited
GPO Box 2307, Melbourne VIC 3001
Email: compliance@eqt.com.au

We will acknowledge receipt of the complaint within 1 Business Day or as soon as possible after receiving the complaint. We will seek to resolve your complaint as soon as practicable but not more than 30 calendar days after receiving the complaint.

If you are not satisfied with our response to your complaint, you may be able to lodge a complaint with the Australian Financial Complaints Authority ("AFCA").

Contact details are:
Online: www.afca.org.au
Phone: 1800 931 678
Email: info@afca.org.au
Post: GPO Box 3, Melbourne VIC 3001.

The external dispute resolution body is established to assist you in resolving your complaint where you have been unable to do so with us. However, it's important that you contact us first.

Reports

We will make the following statements available to all investors;

- A transaction confirmation statement, showing a change in your unit holding (provided when a transaction occurs or on request).
- The Fund's annual audited accounts for each period ended 30 June.
- Annual distribution, tax and confirmation of holdings statements for each period ended 30 June.
- Annual report detailing each of the following:
 - the actual allocation to each asset type;
 - the liquidity profile of the portfolio assets as at the end of the period;
 - the maturity profile of the liabilities as at the end of the period;
 - the derivative counterparties engaged (including capital protection providers);
 - the leverage ratio (including leverage embedded in the assets of the Fund, other than listed equities and bonds) as at the end of the period; and
 - the key service providers if they have changed since the latest report given to investors, including any change in their related party status.

The latest annual report will be available online from www.eqt.com.au/insto.

The following information is available Kardinia's website and/or is disclosed monthly or is available by calling Apex Fund Services on 02 7201 9015:

- the current total NAV of the Fund and the withdrawal value of a unit in each class of units as at the date the NAV was calculated;
- the monthly or annual investment returns over at least a five-year period (or, if the Fund has not been operating for five years, the returns since its inception);
- any change to key service providers if they have changed since last report given to investors;
- for each of the following matters since the last report on those matters:
 - the net return on the Fund's assets after fees, costs and taxes;
 - any material change in the Fund's risk profile;
 - any material change in the Fund's strategy; and
 - any change in the individuals playing a key role in investment decisions for the Fund.

By applying to invest in the Fund, you agree that, to the extent permitted by law, any periodic information which is required to be given to you under the Corporations Act or ASIC policy can be given to you by making that information available on Equity Trustees' or the Investment Manager's website.

Please note that Indirect Investors who access the Fund through an IDPS will receive reports directly from the IDPS Operator and not from the Responsible Entity. However, Equity Trustees will be providing the reports described above to relevant IDPS Operators. Indirect Investors should refer to their IDPS Guide for information on the reports they will receive regarding their investment.

If and when the Fund has 100 or more direct investors, it will be classified by the Corporations Act as a 'disclosing entity'. As a disclosing entity the Fund will be subject to regular reporting and disclosure obligations. Investors would have a right to obtain a copy, free of charge, of any of the following documents:

- the most recent annual financial report lodged with ASIC ("Annual Report");
- any subsequent half yearly financial report lodged with ASIC after the lodgement of the Annual Report; and
- any continuous disclosure notices lodged with ASIC after the Annual Report but before the date of this PDS.

Equity Trustees will comply with any continuous disclosure obligation by lodging documents with ASIC as and when required. Copies of these documents lodged with ASIC in relation to the Fund may be obtained through ASIC's website at www.asic.gov.au.

9. Fees and other costs

DID YOU KNOW?

Small differences in both investment performance and fees and costs can have a substantial impact on your long-term returns. For example, total annual fees and costs of 2% of your investment balance rather than 1% could reduce your final return by up to 20% over a 30-year period (for example, reduce it from \$100,000 to \$80,000).

You should consider whether features such as superior investment performance or the provision of better member services justify higher fees and costs.

You may be able to negotiate to pay lower fees. Ask the Fund or your financial adviser.

TO FIND OUT MORE

If you would like to find out more, or see the impact of the fees based on your own circumstances, the **Australian Securities and Investments Commission (ASIC)** Moneysmart website (www.moneysmart.gov.au) has a managed funds fee calculator to help you check out different fee options.

Fees and other costs

This section shows fees and other costs that you may be charged. These fees and costs may be deducted from your money, from the returns on your investment or from the assets of the managed investment scheme as a whole.

Taxes are set out in another part of this document. You should read all the information about fees and costs because it is important to understand their impact on your investment.

Fees and Costs Summary

Kardinia Long Short Fund		
Type of fee or cost	Amount	How and when paid
Ongoing annual fees and costs¹		
<i>Management fees and costs</i> The fees and costs for managing your investment	1.99%.of the NAV of the Fund ²	The management fees component of management fees and costs are accrued daily and paid from the Fund monthly in arrears and reflected in the unit price. Otherwise, the fees and costs are variable and deducted and reflected in the unit price of the Fund as they are incurred. The management fees component of management fees and costs can be negotiated. Please see "Differential fees" in the "Additional Explanation of Fees and Costs" for further information.
<i>Performance fees</i> Amounts deducted from your investment in relation to the performance of the product	0.07% .of the NAV of the Fund ³	Performance fees are calculated daily and paid quarterly in arrears from the Fund and reflected in the unit price.
<i>Transaction costs</i> The costs incurred by the scheme when buying or selling assets	2.22% of the NAV of the Fund ²	Transaction costs are variable and deducted from the Fund as they are incurred and reflected in the unit price. They are disclosed net of amounts recovered by the buy-sell spread.
Member activity related fees and costs (fees for services or when your money moves in or out of the scheme)		
<i>Establishment fee</i> The fee to open your investment	Not applicable	Not applicable
<i>Contribution fee</i> The fee on each amount contributed to your investment	Not applicable	Not applicable

Kardinia Long Short Fund

Buy-sell spread An amount deducted from your investment representing costs incurred in transactions by the scheme	0.20% upon entry and 0.20% upon exit	These costs are an additional cost to the investor but are incorporated into the unit price and arise when investing application monies and funding withdrawals from the Fund and are not separately charged to the investor. The Buy Spread is paid into the Fund as part of an application and the Sell Spread is left in the Fund as part of a redemption.
Withdrawal fee The fee on each amount you take out of your investment	Not applicable	Not applicable
Exit fee The fee to close your investment	Not applicable	Not applicable
Switching fee The fee for changing investment options	Not applicable	Not applicable

¹ All fees quoted above are inclusive of Goods and Services Tax (GST) and net of any Reduced Input Tax Credits (RITC). See below for more details as to how the relevant fees and costs are calculated.

² The indirect costs component of management fees and costs and transaction costs is based on the relevant costs incurred during the financial year ended 30 June 2025. Please see "Additional Explanation of Fees and Costs" below.

³ This represents the average of the performance fees paid over the previous five financial years ending 30 June 2025 and is not a forecast of future performance fees. See "Performance fees" below for more information.

Additional Explanation of Fees and Costs

Management fees and costs

The management fees and costs include amounts payable for administering and operating the Fund, investing the assets of the Fund, expenses and reimbursements in relation to the Fund and indirect costs if applicable.

Management fees and costs do not include performance fees or transaction costs, which are disclosed separately.

The management fees component of management fees and costs of 1.99% p.a. of the NAV of the Fund is payable to the Investment Manager for managing the assets of the Fund. The management fees component is accrued daily and paid from the Fund monthly in arrears and reflected in the unit price.

The indirect costs and other expenses component of 0.00% p.a. of the NAV of the Fund may include other ordinary expenses of operating the Fund, as well as management fees and costs (if any) arising from interposed vehicles in or through which the Fund invests. The indirect costs and other expenses component is variable and reflected in the unit price of the Fund as the relevant fees and costs are incurred. They are borne by investors, but they are not paid to the Responsible Entity or Investment Manager.

Actual indirect costs for the current and future years may differ. If in future there is an increase to indirect costs disclosed in this PDS, updates will be provided on Equity Trustees' website at www.eqt.com.au/insto where they are not otherwise required to be disclosed to investors under law.

The ordinary expenses for the Fund are estimated to be 1.2875% p. a. of the NAV of the Fund based on the NAV of the Fund as at the date of this PDS. These are the ordinary and every day expenses incurred in operating the Fund such as Responsible Entity fees, custodian fees, and administration and audit fees and are deducted from the assets of the Fund as and when they are incurred. The constitution of the Fund provides that expenses incurred by us in relation to the proper performance of our duties in respect of the Fund are payable or reimbursable out of the assets of the Fund and are unlimited. However, Kardinia has agreed to cap the expenses from the Fund at 0.7025% p. a. (including net GST) of the NAV of the Fund and any ordinary expenses incurred above this amount will be payable by Kardinia. We reserve the right to recover abnormal expenses from the Fund. Abnormal expenses are expected to occur infrequently and may include (without limitation) costs of litigation to protect investors' rights, costs to defend claims in relation to the Fund, investor meetings and termination and wind up costs.

Performance fees

Performance fees include amounts that are calculated by reference to the performance of the Fund. The performance fees for the Fund are 0.07% of the NAV of the Fund.

The performance fee figure that is disclosed in the Fees and Costs Summary is generally based on an average of the performance fees over the previous five financial years, where each performance fee relevant to the Fund is averaged and totalled to give the performance fees for the Fund.

The Performance Fee is equal to 20.5% (including GST net of reduced input tax credits) of the investment returns of the Fund made in excess of the daily RBA Official Cash Rate plus 2% ('Hurdle'). The Hurdle can be changed by the Responsible Entity providing 90 days notice to investors. The management costs for the Fund increases by the amount of the Performance Fee where a Performance Fee becomes payable.

The Performance Fee is calculated and accrued daily in the manner detailed below. The daily performance fee is the percentage outperformance (or underperformance) of the Fund multiplied by the Net Asset Value of the Fund to obtain a dollar value of the Performance Fee for that day ('Daily Performance Fee'). The percentage outperformance is the percentage difference in the gross value of the Fund for that day (adjusted for applications and withdrawals) less the Hurdle (expressed as a percentage). This Daily Performance Fee amount is added to or subtracted from (if it has underperformed) the aggregate Performance Fee amount accrued up until the previous day.

If the aggregate Performance Fee amount up to the previous day is positive, the aggregate Performance Fee amount is included as a liability of the Fund and reflected in the daily Unit price calculation. If the aggregate Performance Fee up to that day is negative, this means that no Performance Fee amount will be reflected in the Unit price. Any negative brought forward aggregate Performance Fee will need to be offset against any positive Performance Fee that has been calculated on a daily basis.

The Performance Fee at the end of a performance fee period (quarterly ending 30 September, 31 December, 31 March and 30 June) is the sum of the Daily Performance Fees accrued during the Performance Fee period, including any amounts carried over from previous Performance Fee periods (if the Performance Fee was not paid at the end of previous Performance Fee periods). The Performance Fee crystallises at each of these dates and is reset for the following performance fee period.

The Responsible Entity may, if the units on issue for the Fund decrease during any Performance Fee period due to withdrawals during that Performance Fee period, extinguish a proportion of any negative Performance Fees for the Fund accrued to adjust for such withdrawals. The Responsible Entity will pass the full amount of the Performance Fee on to the Investment Manager.

Please note that the performance fees disclosed in the Fees and Costs Summary is not a forecast as the actual performance fee for the current and future financial years may differ. The Responsible Entity cannot guarantee that performance fees will remain at their previous level or that the performance of the Fund will outperform the Benchmark.

It is not possible to estimate the actual performance fee payable in any given period, as we cannot forecast what the performance of the Fund will be. Information on prevailing performance fee entitlements will be updated from time to time and available at www.eqt.com.au/insto.

Performance fee example

The example below is provided for illustrative purposes only and does not represent any actual or prospective performance of the Fund. We do not provide any assurance that the Fund will achieve the performance used in the example and you should not rely on this example in determining whether to invest in the Fund.

Assuming an investment of \$50,000, and that the Fund outperforms its Hurdle by the percentages in the table below at the end of the performance fee period, the following Performance Fees would be payable for the outperformance:

Performance against Benchmark	\$ Performance Fee attributable to an investment of \$50,000
+1% p.a.	\$102.50
+2% p.a.	\$205.00
-1% p.a.	\$0

Transaction costs

In managing the assets of the Fund, the Fund may incur transaction costs such as brokerage, buy-sell spreads in respect of the underlying investments of the Fund, settlement costs, clearing costs and applicable stamp duty when assets are bought and sold. Transaction costs also include costs incurred by interposed vehicles in which the Fund invests (if any), that would have been transaction costs if they had been incurred by the Fund itself. Transaction costs are an additional cost to the investor where they are not recovered by the Buy/Sell Spread, and are generally incurred when the assets of the Fund are changed in connection with day-to-day trading or when there are applications or withdrawals which cause net cash flows into or out of the Fund.

The Buy/Sell Spread that is disclosed in the Fees and Costs Summary is a reasonable estimate of transaction costs that the Fund will incur when buying or selling assets of the Fund. These costs are an additional cost to the investor but are incorporated into the unit price and arise when investing application monies and funding withdrawals from the Fund and are not separately charged to the investor. The Buy Spread is paid into the Fund as part of an application and the Sell Spread is left in the Fund as part of a redemption and not paid to Equity Trustees or the Investment Manager. The estimated Buy/Sell Spread is 0.20% upon entry and 0.20% upon exit. The dollar value of these costs based on an application or a withdrawal of \$20,000 is \$40 for each individual transaction. The Buy/Sell Spread can be altered by the Responsible Entity at any time and www.eqt.com.au/insto will be updated as soon as practicable to reflect any change. The Responsible Entity may also waive the Buy/Sell Spread in part or in full at its discretion. The transaction costs figure in the Fees and Costs Summary is shown net of any amount recovered by the Buy/Sell Spread charged by the Responsible Entity.

Transaction costs generally arise through the day-to-day trading of the Fund's assets and are reflected in the Fund's unit price as an additional cost to the investor, as and when they are incurred.

Gross transaction costs	Recovery through buy/sell spread	Net Transaction costs
2.30%	0.18%	2.12%

Our estimate of the total transactional and operational costs for the Fund during the year ended 30 June 2025 was calculated using the Fund's actual transactions during the last financial year. We expect this amount to vary from year to year as it will be impacted by the Fund's volume of trading, brokerage arrangements and other factors. The amount recovered through the buy-sell spread was calculated using actual applications and redemptions during the last financial year. We expect this amount to vary from year to year as

it will be impacted by the volume of applications and withdrawals and any changes in the buy-sell spread for the Fund. The net transaction costs is the difference between these two amounts. All of these amounts are expressed as a percentage of the Fund's average net asset value for the year. Based on an average account balance of \$50,000 over a one-year period, the net transaction costs represent approximately \$1,110.

Can the fees change?

Yes, all fees can change without investor consent, subject to the maximum fee amounts specified in the Constitution. The current maximum management fee to which Equity Trustees is entitled is 1.50% of the Gross Asset Value 'GAV' of the Fund. However, Equity Trustees does not intend to charge that amount and will generally provide investors with at least 30 days' notice of any proposed increase to the management fees component of management fees and costs. In most circumstances, the Constitution defines the maximum level that can be charged for fees described in this PDS. Equity Trustees also has the right to recover all reasonable expenses incurred in relation to the proper performance of its duties in managing the Fund and as such these expenses may increase or decrease accordingly, without notice.

Payments to IDPS Operators

Subject to the law, annual payments may be made to some IDPS Operators because they offer the Fund on their investment menus. Product access is paid by the Investment Manager out of its investment management fee and is not an additional cost to the investor.

Differential fees

The Investment Manager may from time to time negotiate a different fee arrangement (by way of a rebate or waiver of fees) with certain investors who are Wholesale Clients.

Taxation

Please refer to Section 10 of the Product Disclosure Statement for further information on taxation.

Example of annual fees and costs for an investment option

This table gives an example of how the ongoing annual fees and costs in the investment option for this product can affect your investment over a 1-year period. You should use this table to compare this product with other products offered by managed investment schemes.

EXAMPLE – Kardinia Long Short Fund		
BALANCE OF \$50,000 WITH A CONTRIBUTION OF \$5,000 DURING THE YEAR		
Contribution Fees	Nil	For every additional \$5,000 you put in, you will be charged \$0
Plus Management fees and costs	1.99% p.a.	And, for every \$50,000 you have in the Kardinia Long Short Fund you will be charged or have deducted from your investment \$995 each year
Plus Performance fees	0.07% p.a.	And, you will be charged or have deducted from your investment \$35 in performance fees each year
Plus Transaction costs	2.22% p.a.	And, you will be charged or have deducted from your investment \$1,110 in transaction costs
Equals Cost of Kardinia Long Short Fund		If you had an investment of \$50,000 at the beginning of the year and you put in an additional \$5,000 during that year, you would be charged fees and costs of: \$2,140* What it costs you will depend on the investment option you choose and the fees you negotiate.

* Additional fees may apply. Please note that this example does not capture all the fees and costs that may apply to you such as the Buy/Sell Spread.

This example assumes the \$5,000 contribution occurs at the end of the first year, therefore the fees and costs are calculated using the \$50,000 balance only.

Warning: If you have consulted a financial adviser, you may pay additional fees. You should refer to the Statement of Advice or Financial Services Guide provided by your financial adviser in which details of the fees are set out.

ASIC provides a fee calculator on www.moneysmart.gov.au, which you may use to calculate the effects of fees and costs on account balances. The performance fees stated in this table are based on the average performance fee for the Fund, over the previous five financial years. The performance of the Fund for this financial year, and the performance fees, may be higher or lower or not payable in the future. This table is not a forecast of the performance of the Fund or the amount of the performance fees in the future.

The indirect costs and other expenses component of management fees and costs and transaction costs may also be based on estimates. As a result, the total fees and costs that you are charged may differ from the figures shown in the table.

10. Taxation

Taxation

The following information summarises some of the Australian taxation issues you may wish to consider before making an investment in the Fund and assumes that you hold your investment in the Fund on capital account and are not considered to be carrying on a business of investing, trading in investments or investing for the purpose of profit making by sale. The information should be used as a guide only and does not constitute professional tax advice as individual circumstances may differ.

It is recommended that investors seek their own professional advice, specific to their own circumstances, of the taxation implications of investing in the Fund.

General

The Fund is an Australian resident trust for Australian tax purposes. Therefore, the Fund is required to determine its net income (taxable income) for the year of income. On the basis that investors are presently entitled (which is the intention of Equity Trustees) to the net income of the Fund (including net taxable capital gains) or will be attributed their share of assessable income, exempt income, non-assessable non-exempt income and tax offsets (i.e. credits) of the Fund and the Fund is not a public trading trust, the Fund should be treated as a flow-through trust for tax purposes. This means that investors should be taxed on their share of the Fund's net taxable income or the amount attributed to them, and the Fund should generally not be liable to pay Australian income tax.

In the case where the Fund makes a loss for Australian tax purposes, the Fund cannot distribute the tax loss to investors. However, the tax loss may be carried forward by the Fund for offset against taxable income of the Fund in subsequent years, subject to the operation of the trust loss rules.

Attribution Managed Investment Trust ("AMIT") – core rules

The Fund may qualify as an Attribution Managed Investment Trust (AMIT), and if so, intends to elect into the AMIT regime. The AMIT legislation applies an attribution model whereby Equity Trustees as the Responsible Entity of the Fund attributes amounts of trust components of a particular character to investors on a fair and reasonable basis consistent with the operation of the Fund's Constitution, which includes provisions in relation to AMIT. Under the AMIT rules, the following will apply:

Fair and reasonable attribution Each year, the Fund's determined trust components of assessable income, exempt income, non-assessable non-exempt income and tax offsets (i.e. credits) will be allocated to investors on a "fair and reasonable" attribution basis.

Unders or overs adjustments: Where the Fund's determined trust components for a year are revised in a subsequent year (e.g. due to actual amounts differing to the estimates of income, gains / losses or expenses), unders and overs may arise. Unders and overs will generally be carried forward and adjusted in the year of discovery.

Tax statements: The Responsible Entity will provide an AMIT Member Annual ("AMMA") Statement to Unitholders for the income year with details of the amounts attributed to the Unitholder (known as "determined member components").

Cost base adjustments: Where the distribution made is less than (or more than) certain components attributed to investors, then the cost base of an investor's units may be increased (or decreased). Details of cost base adjustments will be included on an investor's AMMA statement.

Large withdrawals: In certain circumstances, gains may be attributed to a specific investor, for example, gains on disposal of assets to fund a large withdrawal being attributed to the redeeming investor.

Penalties: In certain circumstances (e.g. failure to comply with certain AMIT rules), specific penalties may be imposed.

The AMIT rules are intended to reduce complexity, increase certainty and reduce compliance costs for managed investment trusts and their investors. Where the Fund does not elect into the AMIT regime, or has made the election but the election is not effective for the income year (e.g. the Fund does not satisfy the requirements to be a managed investment trust for the income year), the Tax Law applicable to non-AMITs should be relevant. In particular, the Fund should not generally pay tax on behalf of its investors and instead, investors should be assessed for tax on any income and capital gains generated by the Fund to which they become presently entitled.

Deemed Capital Gains Tax ("CGT") Election

Eligible managed investment trusts ("MITs") may make an election to apply a deemed capital account treatment for gains and losses on disposal of certain eligible investments (including equities and units in other trusts but excluding debt securities and similar instruments). Where the election is made the Fund should hold its eligible investments on capital account and gains/(losses) from the disposal of eligible investments should be treated as capital gains/(losses). Capital gains arising on the disposal of eligible investments held for 12 months or greater may be eligible to be treated as discount capital gains.

Where the CGT election is not made, the Fund should hold its eligible investments on revenue account and gains/(losses) from the disposal of eligible investments should be treated as revenue gains or losses.

Controlled Foreign Company ("CFC") Provisions

There are certain tax rules (i.e. the CFC provisions) which may result in assessable income arising in the Fund in relation to investments in foreign equities, where certain control thresholds are met. If such interests were to be held at the end of the income year, the taxable income of the Fund may include a share of net income and gains (i.e. CFC attributable income) from such investments.

Taxation of Financial Arrangements ("TOFA")

The TOFA rules may apply to certain "financial arrangements" held by the Fund. In broad terms, the TOFA regime seeks to recognise "sufficiently certain" returns on certain financial arrangements on an accruals basis for tax purposes rather than on a realisation basis.

Taxation Reform

The tax information included in this PDS is based on the taxation legislation and administrative practice as at the issue date of this PDS, together with proposed changes to the taxation legislation as announced by the Government. However, the Australian tax system is in a continuing state of reform, and based on the Government's reform agenda, it is likely to escalate rather than diminish.

Any reform of a tax system creates uncertainty as to the full extent of announced reforms, or uncertainty as to the meaning of new law that is enacted pending interpretation through the judicial process. These reforms may impact on the tax position of the Fund and its investors. Accordingly, it will be necessary to closely monitor the progress of these reforms, and investors should seek their own professional advice, specific to their own circumstances, of the taxation implications of investing in the Fund.

Tax File Number ("TFN") and Australian Business Number ("ABN")

It is not compulsory for an investor to quote their TFN or ABN. If an investor is making this investment in the course of a business or enterprise, the investor may quote an ABN instead of a TFN. Failure by an investor to quote an ABN or TFN or claim an exemption may cause the Responsible Entity to withhold tax at the top marginal rate, plus the Medicare Levy, on gross payments including distributions or attribution of income to the investor. The investor may be able to claim a credit in their tax return for any TFN or ABN tax withheld. Collection of TFNs is permitted under taxation and privacy legislation.

By quoting their TFN or ABN, the investor authorises Equity Trustees to apply it in respect of all the investor's investments with Equity Trustees. If the investor does not want to quote their TFN or ABN for some investments, Equity Trustees should be advised.

GST

The Fund is registered for GST. The issue or withdrawal of units in the Fund and receipt of distributions are not subject to GST.

The Fund may be required to pay GST included in management and other fees, charges, costs and expenses incurred by the Fund. However, to the extent permissible, the Responsible Entity will claim on behalf of the Fund a proportion of this GST as a reduced input tax credit ("RITC") or input tax credit ("ITC"). Unless otherwise stated, fees and charges quoted in this PDS are inclusive of GST and take into account any available RITCs. The Fund may be entitled to as yet undetermined additional ITCs on the fees, charges or costs incurred. If the Responsible Entity is unable to claim RITCs or ITCs on behalf of the Fund, the remaining GST will be a cost to the Fund.

The impact of GST payments and credits will be reflected in the unit price of the Fund. Investors should seek professional advice with respect to the GST consequences arising from their unit holding.

Australian Taxation of Australian Resident Investors

Distributions

For each year of income, each Australian resident investor will be required to include within their own tax calculations and tax return filings the assessable income, exempt income, non-assessable non-exempt income and tax offsets (i.e. credits) of the Fund attributed to them by Equity Trustees as the Responsible Entity of the Fund.

The tax consequences for investors in the Fund depends on the tax components of assessable income, exempt income, non-assessable non-exempt income and tax offsets (i.e. credits) of the Fund attributed to them.

Investors will receive an Annual Tax Statement (or an "AMMA" for an AMIT) detailing all relevant taxation information concerning attributed amounts and cash distributions, including any Foreign Income Tax Offset ("FITO") and franking credit entitlements, returns of capital, assessable income, and any downwards cost base adjustment in the capital gains tax cost base of their units in the Fund (or potentially upwards cost base adjustments in the capital gains tax cost base of their units in the case of an AMIT).

An investor may receive their share of attributed tax components of the Fund or net income in respect of distributions made during the year or where they have made a large withdrawal from the Fund, in which case their withdrawal proceeds may include their share of net income or attributed tax components of assessable income, exempt income, non-assessable non-exempt income and tax offsets (i.e. credits). In addition, because Australian investors can move into and out of the Fund at different points in time, there is the risk that taxation liabilities in respect of gains that have benefited past investors may have to be met by subsequent investors.

Foreign Income

The Fund may derive foreign source income that is subject to tax overseas, for example withholding tax. Australian resident investors should include their share of both the foreign income and the amount of the foreign tax withheld in their assessable income. In such circumstances, investors may be entitled to a FITO for the foreign tax paid, against the Australian tax payable on the foreign source income. To the extent the investors do not have sufficient overall foreign source income to utilise all of the FITOs relevant to a particular year of income, the excess FITOs cannot be carried forward to a future income year.

Disposal of Units by Australian Resident Investors

If an Australian resident investor transfers or redeems their units in the Fund, this may constitute a disposal for tax purposes depending on their specific circumstances.

Where an investor holds their units in the Fund on capital account, a capital gain or loss may arise on disposal and each investor should calculate their capital gain or loss according to their own particular facts and circumstances. As noted above, proceeds on disposal may include a component of distributable income. Generally, in calculating the taxable amount of a capital gain, a discount of 50% for individuals and trusts or 33 & 1/3% for complying Australian superannuation funds may be allowed where the units in the Fund have been held for 12 months or more. No CGT discount is available to corporate investors.

Any capital losses arising from the disposal of the investment may be used to offset other capital gains the investor may have derived. Net capital losses may be carried forward for offset against capital gains of subsequent years but may not be offset against ordinary income.

Australian Taxation of Non-Resident Investors

Tax on Income

The Fund expects to derive income which may be subject to Australian withholding tax when attributed by Equity Trustees as the Responsible Entity of the Fund to non-resident investors.

Australian withholding tax may be withheld from distributions of Australian source income and gains attributed to a non-resident investor. The various components of the net income of the Fund which may be regarded as having an Australian source include Australian sourced interest, Australian sourced other gains, Australian sourced dividends and CGT taxable Australian property.

We recommend that non-resident investors seek independent tax advice before investing, taking into account their particular circumstances and the provisions of any relevant Double Taxation Agreement/Exchange of Information Agreement ("EOI") between Australia and their country of residence.

Disposal of Units by Non-Resident Investors

Based on the Fund's investment profile, generally non-resident investors holding their units on capital account should not be subject to Australian capital gains tax on the disposal of units in the Fund unless the units were capital assets held by the investor in carrying on a business through a permanent establishment in Australia. Australian tax may apply in certain circumstances if the non-resident holds their units on revenue account. CGT may also apply in some cases where the Fund has a direct or indirect interest in Australian real property. We recommend that non-resident investors seek independent tax advice in relation to the tax consequences of the disposal of their units.

11. Other important information

Consent

The Investment Manager, Administrator and the Prime Broker/Custodian have given and, as at the date of this PDS, have not withdrawn:

- their written consent to be named in this PDS as the investment manager, administrator prime broker/custodian of the Fund respectively; and
- their written consent to the inclusion of the statements made about them and the Fund which are specifically attributed to them, in the form and context in which they appear.

The Investment Manager, the Administrator and the Prime Broker/Custodian have not otherwise been involved in the preparation of this PDS or caused or otherwise authorised the issue of this PDS. Neither the Investment Manager, the Administrator, the Prime Broker/Custodian nor their employees or officers accept any responsibility arising in any way for errors or omissions, other than those statements for which it has provided its written consent to Equity Trustees for inclusion in this PDS.

Constitution of the Fund

You will be issued units in the Fund when you invest. Subject to the rights, obligations and restrictions of a class, each unit represents an equal undivided fractional beneficial interest in the assets of the Fund as a whole subject to liabilities, but does not give you an interest in any particular property of the Fund.

Equity Trustees' responsibilities and obligations, as the responsible entity of the Fund, are governed by the Constitution as well as the Corporations Act and general trust law. The Constitution contains a number of provisions relating to the rights, terms, conditions and obligations imposed on both Equity Trustees, as the responsible entity of the Fund, and investors. Some of the provisions of the Constitution are discussed elsewhere in this PDS.

Other provisions relate to an investor's rights under the Constitution, and include:

- an investor's right to share in any Fund income, and how we calculate it;
- what you are entitled to receive when you withdraw or if the Fund is wound up;
- an investor's right to withdraw from the Fund - subject to the times when we can cease processing withdrawals, such as if a Fund becomes 'illiquid';
- the nature of the units - identical rights attach to all units within a class; and
- an investor's rights to attend and vote at meetings – these provisions are mainly contained in the Corporations Act.

There are also provisions governing our powers and duties, including:

- how we calculate unit prices, the maximum amount of fees we can charge and expenses we can recover;
- when we can amend the Constitution - generally we can only amend the Constitution where we reasonably believe that the changes will not adversely affect investors' rights. Otherwise the Constitution can only be amended if approved at a meeting of investors;
- when we can retire as the Responsible Entity of the Fund - which is as permitted by law;
- when we can be removed as the Responsible Entity of the Fund - which is when required by law; and
- our broad powers to invest, borrow and generally manage the Fund.

The Constitution also deals with our liabilities in relation to the Fund and when we can be reimbursed out of the Fund's assets.

For example, we can be reimbursed for any liabilities we incur in connection with the proper performance of our powers and duties in respect of the Fund.

As mentioned above, Equity Trustees' responsibilities and obligations as the Responsible Entity of the Fund are governed by the Constitution of the Fund, the Corporations Act and general trust law, which require that we:

- act in the best interests of investors and, if there is a conflict between investors' interests and our own, give priority to investors;
- ensure the property of the Fund is clearly identified, held separately from other funds and our assets, and is valued regularly;
- ensure payments from the Fund's property are made in accordance with the Constitution and the Corporations Act; and
- report to ASIC any breach of the Corporations Act in relation to the Fund which has had, or is likely to have, a materially adverse effect on investors' interests.

Copies of the Constitution are available, free of charge, on request from Equity Trustees.

Electronic documents

You can choose whether to have notice of meeting, any other meeting related documents and financial reports sent to you in physical or electronic form. When you complete the application form you will be asked to make an election (which you can change at any time).

You can also request to have any specific meeting related document or financial report provided to you in physical or electronic form at any time by contacting the responsible entity on the contact details shown on the front page of this document.

Non-listing of units

The units in the Fund are not listed on any stock exchange and no application will be made to list the units in the Fund on any stock exchange.

Termination of the Fund

The Responsible Entity may resolve at any time to terminate and liquidate the Fund (if it provides investors with notice) in accordance with the Constitution and the Corporations Act. Upon termination and after conversion of the assets of the Fund into cash and payment of, or provision for, all costs, expenses and liabilities (actual and anticipated), the net proceeds will be distributed pro-rata among all investors according to the number of units they hold in a class in the Fund.

Our legal relationship with you

Equity Trustees' responsibilities and obligations, as the Responsible Entity of the Fund, are governed by the Constitution of the Fund, as well as the Corporations Act and general trust law. The Constitution of the Fund contains a number of provisions relating to the rights, terms, conditions and obligations imposed on both Equity Trustees, as the responsible entity of the Fund, and investors.

Equity Trustees may amend the Constitution if it considers that the amendment will not adversely affect investors rights. Otherwise the Constitution may be amended by way of a special resolution of investors.

To the extent that any contract or obligation arises in connection with the acceptance by Equity Trustees of an application or reliance on this PDS by an investor, any amendment to the Constitution may vary or cancel that contract or obligation. Further, that contract or obligation may be varied or cancelled by a deed executed by Equity Trustees with the approval of a special resolution of investors, or without that approval if Equity Trustees considers the variation or cancellation will not materially adversely affect investor's rights.

A copy of the Constitution of the Fund is available, free of charge, on request from Equity Trustees.

Compliance plan

Equity Trustees has prepared and lodged a compliance plan for the Fund with ASIC. The compliance plan describes the procedures used by Equity Trustees to comply with the Corporations Act and the Constitution of the Fund. Each year the compliance plan for the Fund is audited and the audit report is lodged with ASIC.

Unit pricing discretions policy

Equity Trustees has developed a formal written policy in relation to the guidelines and relevant factors taken into account when exercising any discretion in calculating unit prices (including determining the value of assets and liabilities). A copy of the policy and, where applicable and to the extent required, any other relevant documents in relation to the policy (such as records of any discretions which are outside the scope of, or inconsistent with, the unit pricing policy) will be made available to investors free of charge on request.

Indemnity

Equity Trustees, as the responsible entity of the Fund, is indemnified out of the Fund against all liabilities incurred by it in the proper performance of any of its powers or duties in relation to the Fund. To the extent permitted by the Corporations Act, this indemnity includes any liability incurred as a result of any act or omission of a delegate or agent appointed by the Responsible Entity. Subject to the law, Equity Trustees may retain or pay out from the assets of the Fund any sum necessary to affect such an indemnity.

Anti-Money Laundering and Counter Terrorism Financing ("AML/CTF")

Australia's AML/CTF laws require Equity Trustees to adopt and maintain a written AML/CTF Program. A fundamental part of the AML/CTF Program is that Equity Trustees must hold up-to-date information about investors (including beneficial owner information) in the Fund.

To meet this legal requirement, we need to collect certain identification information (including beneficial owner information) and documentation ("KYC Documents") from new investors. Existing investors may also be asked to provide KYC Documents as part of an ongoing customer due diligence/verification process to comply with AML/CTF laws. If applicants or investors do not provide the applicable KYC Documents when requested, Equity Trustees may be unable to process an application, or may be unable to provide products or services to existing investors until such time as the information is provided.

In order to comply with AML/CTF Laws, Equity Trustees may also disclose information including your personal information that it holds about the applicant, an investor, or any beneficial owner, to its related bodies corporate or service providers, or relevant regulators of AML/CTF Laws (whether inside or outside Australia). Equity Trustees may be prohibited by law from informing applicants or investors that such reporting has occurred.

Equity Trustees and the Investment Manager shall not be liable to applicants or investors for any loss you may suffer because of compliance with the AML/CTF laws.

Common Reporting Standard ("CRS")

The CRS is developed by the Organisation of Economic Co-operation and Development and requires certain financial institutions resident in a participating jurisdiction to document and identify reportable accounts and implement due diligence procedures. These financial institutions will also be required to report certain information on reportable accounts to their relevant local tax authorities.

Australia signed the CRS Multilateral Competent Authority Agreement and has enacted provisions within the domestic tax legislation to implement CRS in Australia. Australian financial institutions need to document and identify reportable accounts, implement due diligence procedures and report certain information with respect to reportable accounts to the ATO. The ATO may then exchange this information with foreign tax authorities in the relevant signatory countries.

In order to comply with the CRS obligations, we may request certain information from you. Unlike FATCA, there is no withholding tax that is applicable under CRS.

Information on underlying investments

Information regarding the underlying investments of the Fund will be provided to an investor of the Fund on request, to the extent Equity Trustees is satisfied that such information is required to enable the investor to comply with its statutory reporting obligations. This information will be supplied within a reasonable timeframe having regard to these obligations.

Indirect Investors

You may be able to invest indirectly in the Fund via an IDPS by directing the IDPS Operator to acquire units on your behalf. If you do so, you will need to complete the relevant forms provided by the IDPS Operator and not the Application Form accompanying the PDS. This will mean that you are an Indirect Investor in the Fund and not an investor or member of the Fund. Indirect Investors do not acquire the rights of an investor (except in relation to access to Equity Trustee's complaints resolution process – see Section 8) as such rights are acquired by the IDPS Operator who may exercise, or decline to exercise, these rights on your behalf.

Indirect Investors do not receive reports or statements from us and the IDPS Operator's application and withdrawal conditions determine when you can direct the IDPS Operator to apply or redeem. Your rights as an Indirect Investor should be set out in the IDPS Guide or other disclosure document issued by the IDPS Operator.

Foreign Account Tax Compliance Act ("FATCA")

In April 2014, the Australian Government signed an intergovernmental agreement ("IGA") with the United States of America ("U.S."), which requires all Australian financial institutions to comply with the FATCA Act enacted by the U.S. in 2010.

Under FATCA, Australian financial institutions are required to collect and review their information to identify U.S. residents and U.S. controlling persons that invest in assets through non-U.S. entities. This information is reported to the Australian Taxation Office ("ATO"). The ATO may then pass that information onto the U.S. Internal Revenue Service.

In order to comply with the FATCA obligations, we may request certain information from you. Failure to comply with FATCA obligations may result in the Fund, to the extent relevant, being subject to a 30% withholding tax on payment of U.S. income or gross proceeds from the sale of certain U.S. investments. If the Fund suffers any amount of FATCA withholding and is unable to obtain a refund for the amounts withheld, we will not be required to compensate investors for any such withholding and the effect of the amounts withheld will be reflected in the returns of the Fund.

Your privacy

The Australian Privacy Principles contained in the Privacy Act 1988 (Cth) ("Privacy Act") regulate the way in which we collect, use, disclose, and otherwise handle your personal information. Equity Trustees is committed to respecting and protecting the privacy of your personal information, and our Privacy Policy details how we do this.

It is important to be aware that, in order to provide our products and services to you, Equity Trustees may need to collect personal information about you and any other individuals associated with the product or service offering. In addition to practical reasons, this is necessary to ensure compliance with our legal and regulatory obligations (including under the Corporations Act, the AML/CTF Act and taxation legislation). If you do not provide the information requested, we may not be able to process your application, administer, manage, invest, pay or transfer your investment(s).

You must therefore ensure that any personal information you provide to Equity Trustees is true and correct in every detail. If any of this personal information (including your contact details) changes, you must promptly advise us of the changes in writing. While we will generally collect your personal information from you, your broker or adviser or the Investment Manager and Administrator directly, we may also obtain or confirm information about you from publicly available sources in order to meet regulatory obligations.

In terms of how we deal with your personal information, Equity Trustees will use it for the purpose of providing you with our products and services and complying with our regulatory obligations. Equity Trustees may also disclose it to other members of our corporate group, or to third parties who we work with or engage for these same purposes. Such third parties may be situated in Australia or offshore, however we take reasonable steps to ensure that they will comply with the Privacy Act when collecting, using or handling your personal information.

The types of third parties that we may disclose your information to include, but are not limited to:

- stockbrokers, financial advisers or adviser dealer groups, their service providers and/or any joint holder of an investment;
- those providing services for administering or managing the Fund, including the Investment Manager, Custodian and Administrator, auditors, or those that provide mailing or printing services;
- our other service providers;
- regulatory bodies such as ASIC, ATO, APRA and AUSTRAC; and
- other third parties who you have consented to us disclosing your information to, or to whom we are required or permitted by law to disclose information to.

Equity Trustees or the Investment Manager may from time to time provide you with direct marketing and/or educational material about products and services they believe may be of interest to you. You have the right to "opt out" of such communications by contacting us using the contact details below. In addition to the above information, Equity Trustees' Privacy Policy contains further information about how we handle your personal information, and how you can access information held about you, seek a correction to that information, or make a privacy-related complaint. Full details of Equity Trustees' Privacy Policy are available at www.eqt.com.au. You can also request a copy of the Policy by contacting Equity Trustees' Privacy Officer on +61 3 8623 5000 or by email to privacy@eqt.com.au.

12. Glossary of important terms

Administration Agreement

The administration agreement between the Responsible Entity and Apex.

Administrator

Apex Fund Services (Australia) Pty Limited (ABN 86 149 408 702)

AFSL

Australian Financial Services Licence

Application Form

The Application Form that accompanies this PDS.

ARSN

156 292 625

ASIC

Australian Securities and Investments Commission

Asset Value

Aggregate gross value of all assets in the fund.

ATO

Australian Taxation Office

AUSTRAC

Australian Transaction Reports and Analysis Centre

Business Day

A day other than Saturday or Sunday on which banks are open for general banking business in Sydney.

Buy/Sell Spread

The difference between the application price and withdrawal price of units in the Fund, which reflects the estimated transaction costs associated with buying or selling the assets of the Fund, when investors invest in or withdraw from the Fund.

Cash Custodian

Equity Trustees Limited (ABN 46 004 031 298)

Collateral

Securities or financial instruments or cash which the Fund delivers or is required to deliver to the Prime Broker/Custodian for the purpose of meeting any Margin requirement in accordance with its Prime Broker Agreement, and includes any certificate or other documents of title and transfer in respect of such securities, financial instruments or cash.

Constitution

The document which describes the rights, responsibilities and beneficial interest of both investors and the Responsible Entity in relation to the Fund, as amended from time to time.

Corporations Act

The Corporations Act 2001 and Corporations Regulations 2001 (Cth), as amended from time to time.

Derivative

A financial contract whose value is based on, or derived from, an asset class such as shared, interest rates, currencies or currency exchange rates and commodities. Common derivatives include options, futures and forward exchange contracts.

Equity Trustees

Equity Trustees Limited (ABN 46 004 031 298) which holds an AFSL No. 240975.

Fund

Kardinia Long Short Fund

Futures

An agreement to buy or sell a specified quantity of an underlying asset at a particular time in the future and at a price agreed at the time the contract was executed.

Fund Benchmark

There is no Fund Benchmark however the Performance Fee Hurdle is the daily RBA Official Cash Rate plus 2%.

GST

Goods and Services Tax

IDPS

Investor-directed portfolio service or investor-directed portfolio-like managed investment scheme (in each case, as defined in the Corporations Act). An IDPS is generally the vehicle through which an investor purchases a range of underlying investment options from numerous investment managers.

Indirect Investors

Individuals who invest in the Fund through an IDPS.

Investment Manager

Kardinia Capital Pty Ltd (ABN 20 152 003 186) AFSL 546441.

Liquidity

The ability of an investment to be easily and quickly converted into cash with little loss of capital.

Net Asset Value (NAV)

Value of the investments of the Fund after deducting certain liabilities including income entitlements and contingent liabilities.

PDS

This Product Disclosure Statement issued by Equity Trustees.

Prime Broker/Custodian

Barrenjoey Markets Pty Limited (ABN 66 636 976 059, AFSL 521800). The entity appointed to provide prime broking and custodial services to the Fund.

Responsible Entity

Equity Trustees Limited.

Retail Client

Persons or entities defined as such under section 761G of the Corporations Act.

Reserve Bank

Reserve Bank of Australia

RITC

Reduced Input Tax Credit. Equity Trustees will apply for reduced input tax credits where applicable to reduce the cost of GST to the Fund.

US Person

A person so classified under securities or tax law in the United States of America ("US") including, in broad terms, the following persons:

- (a) any citizen of, or natural person resident in, the US, its territories or possessions; or
- (b) any corporation or partnership organised or incorporated under any laws of or in the US or of any other jurisdiction if formed by a US Person (other than by accredited investors who are not natural persons, estates or trusts) principally for the purpose of investing in securities not registered under the US Securities Act of 1933; or
- (c) any agency or branch of a foreign entity located in the US; or
- (d) a pension plan primarily for US employees of a US Person; or
- (e) a US collective investment vehicle unless not offered to US Persons; or
- (f) any estate of which an executor or administrator is a US Person (unless an executor or administrator of the estate who is not a US Person has sole or substantial investment discretion over the assets of the estate and such estate is governed by non-US law) and all the estate income is non-US income not liable to US income tax; or
- (g) any Fund of which any trustee is a US Person (unless a trustee who is a professional fiduciary is a US Person and a trustee who is not a US Person has sole or substantial investment discretion over the assets of the trust and no beneficiary (or settlor, if the trust is revocable) of the trust is a US Person); or
- (h) any discretionary account or similar account (other than an estate or trust) held by a dealer or other fiduciary for the benefit or account of a US Person; or
- (i) any non-discretionary account or similar account (other than an estate or trust) held by a dealer or other fiduciary organised, incorporated or (if an individual) resident in the US for the benefit or account of a US Person.

Wholesale Client

Person or entity which is not a Retail Client.



KARDINIA LONG SHORT FUND APPLICATION FORM

This application form accompanies the Product Disclosure Statement (PDS)/Information Memorandum (IM) relating to units in the following product/s issued by Equity Trustees Limited (ABN 46 004 031 298, AFSL 240975). The PDS/IM contains information about investing in the Fund/Trust. You should read the PDS/IM in its entirety before applying.

- Kardinia Long Short Fund

The law prohibits any person passing this Application Form on to another person unless it is accompanied by a complete PDS/IM.

- If completing by hand, use a black or blue pen and print within the boxes in BLOCK LETTERS, if you make a mistake, cross it out and initial. DO NOT use correction fluid
- The investor(s) must complete and sign this form
- Keep a photocopy of your completed Application Form for your records

U.S. Persons: This offer is not open to any U.S. Person. Please refer to the PDS/IM for further information.

Foreign Account Tax Compliance Act (FATCA) and Common Reporting Standard (CRS)

We are required to collect certain information to comply with FATCA and CRS, please ensure you complete section 7.

If investing with an authorised representative, agent or financial adviser

Please ensure you, your authorised representative, agent and/or financial adviser also complete Section 6.

Provide certified copies of your identification documents

Please refer to section 9 on AML/CTF Identity Verification Requirements.

Send your documents & make your payment

See section 2 for payment options and where to send your application form.

SECTION 1 – YOUR CONSUMER ATTRIBUTES

To assist the RE in meeting the Design and Distribution Obligations, you are required to indicate the purpose of your investment by responding to each of the questions set out below. Your responses should reflect your objectives and needs for this Investment. Please tick **only 1 box** for each question below.

The below only needs to be answered where you are a **direct retail investor** (i.e., does not apply to Indirect or intermediated investments such as those made by platforms, custodians, etc.). **If you are not a retail investor you may be required to provide a wholesale certificate to support your application.**

Further information in relation to these questions can be found in the Target Market Determination (TMD) for the Fund. If you wish to access the TMD, please visit <https://www.eqt.com.au/insto/>

1. Have you received advice prior to applying to invest in the Fund?

- ☐ I/We have received personal advice in relation to my investment in this Fund
- ☐ I/We have not received any advice in relation to my investment in this Fund

2. What is your primary investment objective(s)?

- ☐ Capital growth ☐ Capital preservation ☐ Income Distribution

3. What percentage of your total investable assets are you directing to this fund?

- ☐ Solution/Standalone (up to 100%) ☐ Major allocation (up to 75%)
- ☐ Core component (up to 50%) ☐ Minor allocation (up to 25%)
- ☐ Satellite allocation (up to 10%)

4. Please select your Intended investment timeframe

- ☐ Short term (up to and including 2 years) ☐ Medium term (More than 2 years but less than 5 years)
- ☐ Medium to long term (equal to 5 years but less than 7 years) ☐ Long term (7 years or more)

5. What is your tolerance for risk?

- ☐ Low risk and return- I/we can tolerate up to 1 period of underperformance over 20 years and a low target return from this investment. ☐ Medium risk and return - I/we can tolerate up to 4 periods of underperformance over 20 years and a moderate target return from this investment.
- ☐ High risk and return- I/we can tolerate up to 6 periods of underperformance over 20 years in order to achieve higher returns this investment. ☐ Very High risk and return - I/we can tolerate more than 6 periods of underperformance over 20 years (high volatility and potential losses) in order to achieve accelerated returns from this investment.
- ☐ Extremely high – I/We can tolerate significant volatility and losses as I/we are seeking to obtain accelerated returns

6. Under normal circumstances, within what period do you expect to be able to access your funds for this investment?

- ☐ Within one week ☐ Within one month
- ☐ Within three months ☐ Within one year
- ☐ Within five years ☐ Within ten years
- ☐ More than 10 years ☐ At the Issuer's discretion

Please note:

1. Failure to complete the above questions may result in your application not being accepted;
2. Acceptance of your application should not be taken as a representation or confirmation that an investment in the Fund is, or is likely to be, consistent with your intentions, objectives and needs as indicated in your responses to these questions; and
3. For further information on the suitability of this product, please refer to your financial adviser and/or the TMD

SECTION 1.2 – ARE YOU AN EXISTING INVESTOR IN THE FUND/TRUST AND WISH TO ADD TO YOUR INVESTMENT?

Do you have an existing investment in the Fund/Trust and the information provided remains current and correct?

☐ **Yes**, if you can tick both of the boxes below, complete Sections 2 and 8

☐ I/We confirm there are no changes to our identification documents previously provided and that these remain current and valid.

☐ I/We confirm there have been no changes to our FATCA or CRS status

Existing investor number:

If there have been changes in your identification documents or FATCA/CRS status since your last application, please complete the full Application Form as indicated below.

☐ **No**, please complete sections relevant to you as indicated below:

Investor Type:

☐ **Individuals/Joint:** complete section 2, 3, 6 (if applicable), 7, 8 & 9

☐ **Companies:** complete section 2, 4, 6 (if applicable), 7, 8 & 9

☐ **Custodians on behalf of underlying clients:** complete section 2, 4, 5, 5.1, 6 (if applicable), 7, 8 & 9

☐ **Trusts/superannuation funds:**

- with an individual trustee – complete sections 2, 3, 5, 6 (if applicable), 7, 8 & 9
- with a company as a trustee – complete sections 2, 4, 5, 6 (if applicable), 7, 8 & 9

If you are an Association, Co-operative, Partnership, Government Body or other type of entity not listed above, please contact Equity Trustees.

SECTION 2 – INVESTMENT DETAILS

Investment to be held in the name(s) of (must include name(s) of investor(s))

Postal address

Suburb

State

Postcode

Country

Email address

Contact no.

FUND/TRUST NAME	APIR CODE	APPLICATION AMOUNT (AUD)
Kardinia Long Short Fund	BFL0010AU	\$

The minimum initial investment is \$20,000

Distribution Instructions

If you do not select a distribution option, we will automatically reinvest your distribution. If you select cash, please ensure you provide your bank details below.

- ☐ **Reinvest distributions** if you select this option your distribution will be reinvested in the Fund/Trust
- ☐ **Pay distributions to the bank** if you select this option your distribution will be paid to the bank account below

Investor bank details

For withdrawals and distributions (if applicable), these must match the investor(s)' name and must be an AUD-denominated bank account with an Australian domiciled bank.

Financial institution name and branch location

BSB number

Account number

Account name

Payment method

- ☐ Cheque – payable to <Equity Trustees Limited as RE for Kardinia Long Short Fund>
- ☐ Direct credit – pay to:

Financial institution name and branch location	St. George Bank
BSB number	332002
Account number	553759826
Swift/BIC	KACPAU32
Account name	EQT as RE for Kardinia Fund
Reference	Please include investor name

Source of investment

Please indicate the source of the investment amount (e.g. retirement savings, employment income):

Send your completed Application Form to:

Apex Fund Services Pty Ltd
PO Box 189, Flinders Lane
Melbourne VIC 8009
Australia Phone: +61 2 7201 9015
Email: Ssg.AUS@apexfs.com

Please ensure you have completed all relevant sections and signed the Application Form

SECTION 3 – INVESTOR DETAILS – INDIVIDUALS/JOINT

Please complete if you are investing individually, jointly or you are an individual or joint trustee.

See Group A AML/CTF Identity Verification Requirements in Section 9

Investor 1

Title	First name(s)	Surname
<input type="text"/>	<input type="text"/>	<input type="text"/>

Residential address (not a PO Box/RMB/Locked Bag)

Suburb	State	Postcode	Country
<input type="text"/>	<input type="text"/>	<input type="text"/> <input type="text"/> <input type="text"/> <input type="text"/> <input type="text"/>	<input type="text"/>

Email address

(Statements will be sent to this address, unless you elect otherwise in Section 6)

Contact no.

Date of birth (DD/MM/YYYY)

 / /

Tax File Number* – or exemption code

Country of birth

Occupation

Does the investor named above hold a prominent public position or function in a government body (local, state, territory, national or foreign) or in an international organisation or are you an immediate family member or a business associate of such a person?

☐ No

☐ Yes, please give details:

Investor 2

Title	First name(s)	Surname
<input type="text"/>	<input type="text"/>	<input type="text"/>

Residential address (not a PO Box/RMB/Locked Bag)

Suburb	State	Postcode	Country
<input type="text"/>	<input type="text"/>	<input type="text"/> <input type="text"/> <input type="text"/> <input type="text"/> <input type="text"/>	<input type="text"/>

Email address

(Statements will be sent to this address, unless you elect otherwise in Section 6)

Contact no.

Date of birth (DD/MM/YYYY)

 / /

Tax File Number* – or exemption code

Country of birth

Occupation

Does the investor named above hold a prominent public position or function in a government body (local, state, territory, national or foreign) or in an international organisation or are you an immediate family member or a business associate of such a person?

☐ No

☐ Yes, please give details:

If there are more than 2 registered owners, please provide details as an attachment.

SECTION 4 – INVESTOR DETAILS – COMPANIES/CORPORATE TRUSTEE

Please complete if you are investing for a company or where the company is acting as trustee.

See Group B AML/CTF Identity Verification Requirements in Section 9

Full company name (as registered with ASIC or relevant foreign registered body)

Registered office address (not a PO Box/RMB/Locked Bag)

Suburb

State

Postcode

Country

Australian Company Number

Tax File Number* – or exemption code

Australian Business Number* (if registered in Australia) or equivalent foreign company identifier

Contact Person

Title

First name(s)

Surname

Email address

(Statements will be sent to this address, unless you elect otherwise in Section 6)

Contact no.

Principal place of business: If the principal place of business is the same as the registered office street address, state 'As above' below. Otherwise provide address details. For foreign companies registered with ASIC please provide a local agent name and address if you do not have a principal place of business in Australia.

Principal Place of Business Address (not a PO Box/RMB/Locked Bag)

Suburb

State

Postcode

Country

Registration details

Name of regulatory body

Identification number (e.g. ARBN)

Controlling Persons, Directors and Beneficial Owners

All beneficial owners who own, hold or control either directly or indirectly 25% or more of the issued capital of a proprietary or private company that is not regulated i.e. does not have an AFSL or ACLN etc., will need to provide Group A AML/CTF Identity Verification Requirements specified in Section 9. In the case of an unregulated public company not listed on a securities exchange, provide the details of the senior managing official(s) as controlling person(s) (e.g. managing director, senior executive(s) etc. who is/are authorised to sign on the company's behalf, and make policy, operational and financial decisions) in the following sections. All proprietary and private companies, whether regulated or unregulated, must provide the names of all of the directors.

Names of the Directors of a Proprietary or Private Company whether regulated or unregulated

1	2
3	4

If there are more than 4 directors, please write the other names below.

Names of the Beneficial Owners or Senior Managing Official(s)

Select:

- ☐ Beneficial owner 1 of an unregulated proprietary or private company; OR
- ☐ Senior Managing Official of an unregulated, unlisted, public (e.g. Limited) company

Title	First name(s)	Surname
<input type="text"/>	<input type="text"/>	<input type="text"/>

Residential address (not a PO Box/RMB/Locked Bag)

Suburb	State	Postcode	Country
<input type="text"/>	<input type="text"/>	<input type="text"/> <input type="text"/> <input type="text"/> <input type="text"/>	<input type="text"/>

Date of birth (DD/MM/YYYY)

 / /

Does the beneficial owner named above hold a prominent public position or function in a government body (local, state, territory, national or foreign) or in an international organisation or are you an immediate family member or a business associate of such a person?

- ☐ No ☐ Yes, please give details:

Select:

- ☐ Beneficial owner 2 of an unregulated proprietary or private company; OR
- ☐ Senior Managing Official of an unregulated, unlisted, public (e.g. Limited) company

Title	First name(s)	Surname
<input type="text"/>	<input type="text"/>	<input type="text"/>

Residential address (not a PO Box/RMB/Locked Bag)

Suburb	State	Postcode	Country
<input type="text"/>	<input type="text"/>	<input type="text"/> <input type="text"/> <input type="text"/> <input type="text"/>	<input type="text"/>

Date of birth (DD/MM/YYYY)

 / /

Does the beneficial owner named above hold a prominent public position or function in a government body (local, state, territory, national or foreign) or in an international organisation or are you an immediate family member or a business associate of such a person?

- ☐ No ☐ Yes, please give details:

If there are more than 2 beneficial owners or managing officials, please copy and complete this page for the other persons or alternatively, provide the additional details as an attachment.

SECTION 5 – INVESTOR DETAILS – TRUSTS/SUPERANNUATION FUNDS

Please complete if you are investing for a trust or superannuation fund.

See Group C AML/CTF Identity Verification Requirements in section 9

Full name of trust or superannuation fund

Full name of business (if any)

Country where established

Australian Business Number* (if obtained)

--	--	--	--	--	--	--	--	--	--	--	--

Tax File Number* – or exemption code

--	--	--	--	--	--	--	--	--	--

Trustee details – How many trustees are there?

- ☐ **Individual trustee(s)** – complete Section 3 – Investor details – Individuals/Joint
- ☐ **Company trustee(s)** – complete Section 4 – Investor details – Companies/Corporate Trustee
- ☐ **Combination** – trustee(s) to complete each relevant section

Type of Trust

- ☐ **Registered Managed Investment Scheme**

Australian Registered Scheme Number (ARSN)

--	--	--	--	--	--	--	--

- ☐ **Regulated Trust** (including self-managed superannuation funds and registered charities that are trusts)

Name of Regulator (e.g. ASIC, APRA, ATO, ACNC)

Registration/Licence details or ABN

- ☐ **Other Trust** (unregulated)

Please describe

Beneficiaries of an unregulated trust

Please provide details below of any beneficiaries who directly or indirectly are entitled to an interest of 25% or more of the trust.

1	2
3	4

If there are no beneficiaries of the trust, describe the class of beneficiary (e.g. the name of the family group, class of unit holders, the charitable purpose or charity name):

Other Trust (unregulated) Continued**Settlor details**

Please provide the full name and last known address of the settlor of the trust where the initial asset contribution to the trust was greater than \$10,000.

- ☐ This information is not required if the initial asset contribution was less than \$10,000, and/or
- ☐ This information is not required if the settlor is deceased

Settlor's full name and last known address

Beneficial owners of an unregulated trust

Please provide details below of any beneficial owner of the trust. A beneficial owner is any individual who directly or indirectly has a 25% or greater interest in the trust or is a person who exerts control over the trust. This includes the appointer of the trust who holds the power to appoint or remove the trustees of the trust.

All beneficial owners will need to provide Group A AML/CTF Identity Verification Requirements in Section 9

Beneficial owner 1 or Controlling Person 1

Select:

- ☐ Beneficial owner 1; OR
- ☐ Controlling Person – What is the role e.g. Appointer:

--

Title

First name(s)

Surname

--

--

--

Residential address (not a PO Box/RMB/Locked Bag)

--

Suburb

State

Postcode

Country

--

--

--	--	--	--

--

Date of birth (DD/MM/YYYY)

	/		/	
--	---	--	---	--

Does the beneficial owner named above hold a prominent public position or function in a government body (local, state, territory, national or foreign) or in an international organisation or are you an immediate family member or a business associate of such a person?

- ☐ No ☐ Yes, please give details:

--

Beneficial owner 2 or Controlling Person 2

Select:

- ☐ Beneficial owner 2; OR
- ☐ Controlling Person – What is the role e.g. Appointer:

--

Title

First name(s)

Surname

--

--

--

Residential address (not a PO Box/RMB/Locked Bag)

--

Suburb

State

Postcode

Country

--

--

--	--	--	--

--

Date of birth (DD/MM/YYYY)

	/		/	
--	---	--	---	--

Does the beneficial owner named above hold a prominent public position or function in a government body (local, state, territory, national or foreign) or in an international organisation or are you an immediate family member or a business associate of such a person?

☐ No ☐ Yes, please give details:

If there are more than 2 beneficial owners or controlling persons, please copy and complete this page for the other persons or alternatively, provide the additional details as an attachment.

SECTION 5.1 – CUSTODIAN ATTESTATION: CHAPTER 4, PARTS 4.4.18 AND 4.4.19 OF THE AML/CTF RULES

If you are a Company completing this Application Form on behalf of an individual, another company, a trust or other entity, in a Custodial capacity, please complete this section.

In accordance with Chapter 4, part 4.4.19 (1)(a) to (d) of the AML/CTF Rules, does the Custodian meet the definition (see 'Section 10 – Glossary') of a Custodian?

☐ No ☐ Yes

In accordance with Chapter 4, part 4.4.19 (e) of the AML/CTF Rules, do you, in your capacity as Custodian attest that prior to requesting this designated service from Equity Trustees, it has carried out and will continue to carry out, all applicable customer identification procedures on the underlying account holder named or to be named in the Fund's register, including conducting ongoing customer due diligence requirements in accordance with Chapter 15 of the AML/CTF Rules?

☐ No ☐ Yes

If you answered YES to all of the above questions, then Equity Trustees is able to apply the Chapter 4, part 4.4 Custodian rules to this account and will rely upon the customer due diligence conducted by the Custodian on the underlying account holder named or to be named in the Fund's register.

If requested to do so at any time after the provision of this designated service, the Custodian agrees to honour any reasonable request made by Equity Trustees for information or evidence about the underlying account holder in order to allow Equity Trustees to meet its obligations under the AML/CTF Act.

☐ No ☐ Yes

Excepting the below circumstances where the custodian answered NO or did not complete any of the above questions, no other information about the underlying account holder is required to be collected. However, further information about you as the Custodian and as a company is required to be collected and verified as required by the AML/CTF rules. Please complete the rest of this form for the Custodian.

Excepting circumstances:

If you answered NO or did not complete any of the above questions, then we are unable to apply the Chapter 4, part 4.4 Custodian rules to this application. We are therefore obligated to conduct full Know Your Client procedures on the underlying account holder named or to be named in the Fund's register including any named nominee, as well as the trustees, beneficial owners and controlling persons of the underlying named account in addition to the Custodian. Therefore, please complete the relevant forms and provide identity documents for all parties connected to this account.

SECTION 6 – AUTHORISED REPRESENTATIVE, AGENT AND/OR FINANCIAL ADVISER

Please complete if you are appointing an authorised representative, agent and/or financial adviser.

See Group D AML/CTF Identity Verification Requirements in Section 9

- ☐ I am an **authorised representative or agent** as nominated by the investor(s)

You must attach a valid authority such as Power of Attorney, guardianship order, grant of probate, appointment of bankruptcy etc. that is a certified copy. The document must be current and complete, signed by the investor or a court official and permits the authorised representative or agent to transact on behalf of the investor.

Full name of authorised representative or agent

Role held with investor(s)

Signature

Date

- ☐ I am a **financial adviser** as nominated by the investor

Name of adviser

AFSL number

Dealer group

Name of advisory firm

Postage address

Suburb

State

Postcode

Country

Email address

Contact no.

Financial Advice (only complete if applicable)

- ☐ The investor has received personal financial product advice in relation to this investment from a licensed financial adviser and that advice is current.

Financial Adviser Declaration

- ☐ I/We hereby declare that I/we are not a US Person as defined in the PDS/IM.
- ☐ I/We hereby declare that the investor is not a US Person as defined in the PDS/IM.
- ☐ I/We have attached the relevant CIP documents;

Signature

Date

Access to information

Unless you elect otherwise, your authorised representative, agent and/or financial adviser will also be provided access to your investment information and/or receive copies of statements and transaction confirmations. By appointing an authorised representative, agent and/or financial adviser you acknowledge that you have read and agreed to the terms and conditions in the PDS/IM relating to such appointment.

- ☐ Please tick this box if you DO NOT want your authorised representative, agent and/or financial adviser to have access to information about your investment.
- ☐ Please tick this box if you DO NOT want copies of statements and transaction confirmations sent to your authorised representative, agent and/or financial adviser.
- ☐ Please tick this box if you want statements and transaction confirmations sent ONLY to your authorised representative, agent and/or financial adviser.

SECTION 7 – FOREIGN ACCOUNT TAX COMPLIANCE ACT (FATCA), COMMON REPORTING STANDARD (CRS) SELF-CERTIFICATION FORM – ALL INVESTORS MUST COMPLETE

Sub-Section I – Individuals

Please fill this Sub-Section I only if you are an individual. If you are an entity, please fill Sub-Section II.

1. Are you a US tax resident (e.g. US citizen or US resident)?

- ☐ Yes: provide your US Taxpayer Identification Number (TIN) and continue to question 2

Investor 1

Investor 2

- ☐ No: continue to question 2

2. Are you a tax resident of any other country outside of Australia?

- ☐ Yes: state each country and provide your TIN or equivalent (or Reason Code if no TIN is provided) for each jurisdiction below and skip to question 12

Investor 1

Country/Jurisdiction of tax residence	TIN	If no TIN available enter Reason A, B or C
1		
2		

Investor 2

Country/Jurisdiction of tax residence	TIN	If no TIN available enter Reason A, B or C
1		
2		

If more space is needed please provide details as an attachment.

- ☐ No: skip to question 12

Reason Code:

If TIN or equivalent is not provided, please provide reason from the following options:

- Reason A: The country/jurisdiction where the investor is resident does not issue TINs to its residents.
- Reason B: The investor is otherwise unable to obtain a TIN or equivalent number (Please explain why the investor is unable to obtain a TIN in the below table if you have selected this reason).
- Reason C: No TIN is required. (Note. Only select this reason if the domestic law of the relevant jurisdiction does not require the collection of the TIN issued by such jurisdiction).

If Reason B has been selected above, explain why you are not required to obtain a TIN:

	Reason B explanation
Investor 1	
Investor 2	

Sub-Section II – Entities

Please fill this Sub-Section II only if you are an entity. If you are an individual, please fill Sub-Section I.

3. Are you an Australian complying superannuation fund?

- ☐ Yes: skip to question 12
- ☐ No: continue to question 4

FATCA

4. Are you a US Person?

- ☐ Yes: continue to question 5
- ☐ No: skip to question 6

5. Are you a Specified US Person?

- ☐ Yes: provide your TIN below and skip to question 7

- ☐ No: indicate exemption type and skip to question 7

6. Are you a Financial Institution for the purposes of FATCA?

- ☐ Yes: provide your Global Intermediary Identification Number (GIIN)

If you do not have a GIIN, please provide your FATCA status below and then continue to question 7. If you are a sponsored entity, please provide your GIIN above and your sponsor's details below and then continue to question 7.

- ☐ Exempt Beneficial Owner, provide type below:

- ☐ Deemed-Compliant FFI (other than a Sponsored Investment Entity or a Trustee Documented Trust), provide type below:

- ☐ Non-Participating FFI, provide type below:

- ☐ Sponsored Entity. Please provide the Sponsoring Entity's name and GIIN:

- ☐ Trustee Documented Trust. Please provide your Trustee's name and GIIN:

- ☐ Other, provide details:

- ☐ No: continue to question 7

CRS**7. Are you a tax resident of any country outside of Australia and the US?**

- ☐ Yes: state each country and provide your TIN or equivalent (or Reason Code if no TIN is provided) for each jurisdiction below and continue to question 8

Investor 1

Country/Jurisdiction of tax residence	TIN	If no TIN available enter Reason A, B or C
1		
2		

Investor 2

Country/Jurisdiction of tax residence	TIN	If no TIN available enter Reason A, B or C
1		
2		

If more space is needed please provide details as an attachment.

Reason Code:

If TIN or equivalent is not provided, please provide reason from the following options:

- Reason A: The country/jurisdiction where the investor is resident does not issue TINs to its residents.
- Reason B: The investor is otherwise unable to obtain a TIN or equivalent number (Please explain why the investor is unable to obtain a TIN in the below table if you have selected this reason).
- Reason C: No TIN is required. (Note. Only select this reason if the domestic law of the relevant jurisdiction does not require the collection of the TIN issued by such jurisdiction).

If Reason B has been selected above, explain why you are not required to obtain a TIN:

	Reason B explanation
Investor 1	
Investor 2	

- ☐ No: continue to question 8

8. Are you a Financial Institution for the purpose of CRS?

- ☐ Yes: specify the type of Financial Institution below and continue to question 9

☐ Reporting Financial Institution

☐ Non-Reporting Financial Institution:

☐ Trustee Documented Trust

☐ Other: please specify:

- ☐ No: skip to question 10

9. Are you an investment entity resident in a non-participating jurisdiction for CRS purposes and managed by another financial Institution?

☐ Yes: skip to question 11

☐ No: skip to question 12

Non-Financial Entities

10. Are you an Active Non-Financial Entity (Active NFE)?

- ☐ Yes: specify the type of Active NFE below and skip to question 12:
- ☐ Less than 50% of the entity's gross income from the preceding calendar year is passive income (e.g. dividends, distribution, interests, royalties and rental income) and less than 50% of its assets during the preceding calendar year are assets held for the production of passive income
- ☐ Corporation that is regularly traded or a related entity of a regularly traded corporation
- Provide name of Listed Entity:
- and exchange on which traded:
- ☐ Governmental Entity, International Organisation or Central Bank
- ☐ Other: please specify:
- ☐ No: you are a Passive Non-Financial Entity (Passive NFE). Continue to question 11

Controlling Persons

11. Does one or more of the following apply to you:

- Is any natural person that exercises control over you (for corporations, this would include directors or beneficial owners who ultimately own 25% or more of the share capital) a tax resident of any country outside of Australia?
- If you are a trust, is any natural person including trustee, protector, beneficiary, settlor or any other natural person exercising ultimate effective control over the trust a tax resident of any country outside of Australia?
- Where no natural person is identified as exercising control of the entity, the controlling person will be the natural person(s) who holds the position of senior managing official.

- ☐ Yes. provide controlling person information below:

Controlling person 1

Title First name(s) Surname

Residential address (not a PO Box/RMB/Locked Bag)

Suburb State Postcode Country

Date of birth (DD/MM/YYYY) / /

Country/Jurisdiction of tax residence	TIN	If no TIN available enter Reason A, B or C
1	<input type="text"/>	<input type="text"/>
2	<input type="text"/>	<input type="text"/>

Controlling person 2

Title	First name(s)	Surname
<input type="text"/>	<input type="text"/>	<input type="text"/>

Residential address (not a PO Box/RMB/Locked Bag)

Suburb	State	Postcode	Country
<input type="text"/>	<input type="text"/>	<input type="text"/> <input type="text"/> <input type="text"/> <input type="text"/>	<input type="text"/>

Date of birth (DD/MM/YYYY) / /

Country/Jurisdiction of tax residence	TIN	If no TIN available enter Reason A, B or C
1		
2		

*If there are more than 2 controlling persons, please provide details as an attachment.***Reason Code:**

If TIN or equivalent is not provided, please provide reason from the following options:

- Reason A: The country/jurisdiction where the investor is resident does not issue TINs to its residents.
- Reason B: The investor is otherwise unable to obtain a TIN or equivalent number (Please explain why the investor is unable to obtain a TIN in the below table if you have selected this reason).
- Reason C: No TIN is required. (Note. Only select this reason if the domestic law of the relevant jurisdiction does not require the collection of the TIN issued by such jurisdiction).

If Reason B has been selected above, explain why you are not required to obtain a TIN:

	Reason B explanation
Investor 1	
Investor 2	

☐ No: continue to question 12**12. Signature and Declaration – ALL investors must sign**☐ I undertake to provide a suitably updated self-certification within 30 days of any change in circumstances which causes the information contained herein to become incorrect.☐ I declare the information above to be true and correct.**Investor 1**

Name of individual/entity

Name of authorised representative

Signature

Date

Investor 2

Name of individual/entity

Name of authorised representative

Signature

Date

SECTION 8 – DECLARATIONS – ALL INVESTORS MUST COMPLETE

In most cases the information that you provide in this form will satisfy the AML/CTF Act, the US Foreign Account Tax Compliance Act (FATCA) and the Common Reporting Standard (CRS). However, in some instances the Responsible Entity may contact you to request further information. It may also be necessary for the Responsible Entity to collect information (including sensitive information) about you from third parties in order to meet its obligations under the AML/CTF Act, FATCA and CRS.

When you complete this Application Form you make the following declarations:

- I/We have received the PDS/IM and made this application in Australia (and/or New Zealand for those offers made in New Zealand).
- I/We have read the PDS/IM to which this Application Form applies and agree to be bound by the terms and conditions of the PDS/IM and the Constitution of the relevant Fund/Trust in which I/we have chosen to invest.
- I/we have carefully considered the features of Fund/Trust as described in the PDS (including its investment objectives, minimum suggested investment timeframe, risk level, withdrawal arrangements and investor suitability) and, after obtaining any financial and/or tax advice that I/we deemed appropriate, am/are satisfied that my/our proposed investment in the Fund/Trust is consistent with my/our investment objectives, financial circumstances and needs.*
- I/We have considered our personal circumstances and, where appropriate, obtained investment and/or taxation advice.
- I/We hereby declare that I/we are not a US Person as defined in the PDS/IM.
- I/We acknowledge that (if a natural person) I am/we are 18 years of age or over and I am/we are eligible to hold units in the Fund/Trust in which I/We have chosen to invest.
- I/We acknowledge and agree that Equity Trustees has outlined in the PDS/IM provided to me/us how and where I/we can obtain a copy of the Equity Trustees Group Privacy Statement.
- I/We consent to the transfer of any of my/our personal information to external third parties including but not limited to fund administrators, fund investment manager(s) and related bodies corporate who are located outside Australia for the purpose of administering the products and services for which I/we have engaged the services of Equity Trustees or its related bodies corporate and to foreign government agencies for reporting purposes (if necessary).
- I/we hereby confirm that the personal information that I/we have provided to Equity Trustees is correct and current in every detail, and should these details change, I/we shall promptly advise Equity Trustees in writing of the change(s).
- I/We agree to provide further information or personal details to the Responsible Entity if required to meet its obligations under anti-money laundering and counter-terrorism legislation, US tax legislation or reporting legislation and acknowledge that processing of my/our application may be delayed and will be processed at the unit price applicable for the Business Day as at which all required information has been received and verified.
- If I/we have provided an email address, I/we consent to receive ongoing investor information including PDS/IM information, confirmations of transactions and additional information as applicable via email.
- I/We acknowledge that Equity Trustees does not guarantee the repayment of capital or the performance of the Fund/Trust or any particular rate of return from the Fund/Trust.
- I/We acknowledge that an investment in the Fund/Trust is not a deposit with or liability of Equity Trustees and is subject to investment risk including possible delays in repayment and loss of income or capital invested.
- I/We acknowledge that Equity Trustees is not responsible for the delays in receipt of monies caused by the postal service or the investor's bank.
- If I/we lodge a fax application request, I/we acknowledge and agree to release, discharge and agree to indemnify Equity Trustees from and against any and all losses, liabilities, actions, proceedings, account claims and demands arising from any fax application.
- If I/we have completed and lodged the relevant sections on authorised representatives, agents and/or financial advisers on the Application Form then I/we agree to release, discharge and indemnify Equity Trustees from and against any and all losses, liabilities, actions, proceedings, account claims and demands arising from Equity Trustees acting on the instructions of my/our authorised representatives, agents and/or financial advisers.
- If this is a joint application each of us agrees that our investment is held as joint tenants.
- I/We acknowledge and agree that where the Responsible Entity, in its sole discretion, determines that:
 - I/we are ineligible to hold units in a Fund/Trust or have provided misleading information in my/our Application Form; or
 - I/we owe any amounts to Equity Trustees, then I/we appoint the Responsible Entity as my/our agent to submit a withdrawal request on my/our behalf in respect of all or part of my/our units, as the case requires, in the Fund/Trust.
- **For Wholesale Clients*** – I/We acknowledge that I am/we are a Wholesale Client (as defined in Section 761G of the Corporations Act 2001 (Cth)) and are therefore eligible to hold units in the Fund/Trust.
- **For New Zealand applicants*** – I/we have read the terms of the offer relating to New Zealand investors, including the New Zealand warning statement.
- **For New Zealand Wholesale Investors*** – I/We acknowledge and agree that:
 - I/We have read the “New Zealand Wholesale Investor Fact Sheet” and PDS/IM or “New Zealand Investors: Selling Restriction” for the Fund/Trust;
 - I am/We are a Wholesale Investor and am/are therefore eligible to hold units in the Fund/Trust; and
 - I/We have not:

- Offered, sold, or transferred, and will not offer, sell, or transfer, directly or indirectly, any units in the Fund/Trust;
 - Granted, issued, or transferred, and will not grant, issue, or transfer, any interests in or options over, directly or indirectly, any units in the Fund/Trust; and
 - Distributed and will not distribute, directly or indirectly, the PDS/IM or any other offering materials or advertisement in relation to any offer of units in the Fund/Trust, in each case in New Zealand, other than to a person who is a Wholesale Investor; and
- I/We will notify Equity Trustees if I/we cease to be a Wholesale Investor; and
 - I/We have separately provided a signed Wholesale Investor Certification located at the end of this Application Form.

All references to Wholesale Investor in this Declaration are a reference to Wholesale Investor in terms of clause 3(2) of Schedule 1 of the Financial Markets Conduct Act 2013 (New Zealand).

* Disregard if not applicable.

***Terms and conditions for collection of Tax File Numbers (TFN) and Australian Business Numbers (ABN)**

Collection of TFN and ABN information is authorised and its use and disclosure strictly regulated by tax laws and the Privacy Act. Investors must only provide an ABN instead of a TFN when the investment is made in the course of their enterprise. You are not obliged to provide either your TFN or ABN, but if you do not provide either or claim an exemption, we are required to deduct tax from your distribution at the highest marginal tax rate plus Medicare levy to meet Australian taxation law requirements.

For more information about the use of TFNs for investments, contact the enquiries section of your local branch of the ATO. Once provided, your TFN will be applied automatically to any future investments in the Fund/Trust where formal application procedures are not required (e.g. distribution reinvestments), unless you indicate, at any time, that you do not wish to quote a TFN for a particular investment. Exempt investors should attach a copy of the certificate of exemption. For super funds or trusts list only the applicable ABN or TFN for the super fund or trust.

When you sign this Application Form you declare that you have read, agree to and make the declarations above

Investor 1

Name of individual/entity

Capacity (e.g. Director, Secretary, Authorised signatory)

Signature

Date

Company Seal (if applicable)

Investor 2

Name of individual/entity

Capacity (e.g. Director, Secretary, Authorised signatory)

Signature

Date

SECTION 9 – AML/CTF IDENTITY VERIFICATION REQUIREMENTS

The AML/CTF Act requires the Responsible Entity to adopt and maintain an Anti-Money Laundering and Counter-Terrorism Financing (AML/CTF) Program. The AML/CTF Program includes ongoing customer due diligence, which may require the Responsible Entity to collect further information.

- Identification documentation provided must be in the name of the investor.
- Non-English language documents must be translated by an accredited translator. Provide both the foreign language document and the accredited English translation.
- Applications made without providing this information cannot be processed until all the necessary information has been provided.
- If you are unable to provide the identification documents described please contact Equity Trustees.

These documents should be provided as an original or a **CERTIFIED COPY** of the original.

Who can certify?

Below is an example of who can certify proof of ID documents under the AML/CTF requirements:

- Bailiff
- Bank officer with 5 or more years of continuous service
- Building society officer with 5 or more years of continuous service
- Chiropractor (licensed or registered)
- Clerk of court
- Commissioner for Affidavits
- Commissioner for Declarations
- Credit union officer with 5 or more years of continuous service
- Dentist (licensed or registered)
- Fellow of the National Tax Accountant's Association
- Finance company officer with 5 or more years of continuous service
- Judge of a court
- Justice of the peace
- Legal practitioner (licensed or registered)
- Magistrate
- Marriage celebrant licensed or registered under Subdivision C of Division 1 of Part IV of the Marriage Act 1961
- Master of a court
- Medical practitioner (licensed or registered)
- Member of Chartered Secretaries Australia
- Member of Engineers Australia, other than at the grade of student
- Member of the Association of Taxation and Management Accountants
- Member of the Australian Defence Force with 5 or more years of continuous service
- Member of the Institute of Chartered Accountants in Australia, the Australian Society of Certified Practising Accountants or the Institute of Public Accountants
- Member of the Parliament of the Commonwealth, a State, a Territory Legislature, or a local government authority of a State or Territory
- Minister of religion licensed or registered under Subdivision A of Division 1 of Part IV of the Marriage Act 1961
- Nurse (licensed or registered)
- Optometrist (licensed or registered)
- Permanent employee of Commonwealth, State or local government authority with at least 5 or more years of continuous service.
- Permanent employee of the Australian Postal Corporation with 5 or more years of continuous service
- Pharmacist (licensed or registered)
- Physiotherapist (licensed or registered)
- Police officer
- Psychologist (licensed or registered)
- Registrar, or Deputy Registrar, of a court
- Sheriff
- Teacher employed on a full-time basis at a school or tertiary education institution
- Veterinary surgeon (licensed or registered)

When certifying documents, the following process must be followed:

- All copied pages of original proof of ID documents must be certified and the certification must not be older than 2 years.
- The authorised individual must ensure that the original and the copy are identical; then write or stamp on the copied document "certified true copy". This must be followed by the date and signature, printed name and qualification of the authorised individual.
- In cases where an extract of a document is photocopied to verify customer ID, the authorised individual should write or stamp "certified true extract".

GROUP A – Individuals/Joint

Each individual investor, individual trustee, beneficial owner, or individual agent or authorised representative must provide one of the following primary photographic ID:

- ☐ A current Australian driver's licence (or foreign equivalent) that includes a photo and signature.
- ☐ An Australian passport (not expired more than 2 years previously).
- ☐ A foreign passport or international travel document (must not be expired)
- ☐ An identity card issued by a State or Territory Government that includes a photo.

If you do NOT own one of the above ID documents, please provide one valid option from Column A and one valid option from Column B.

Column A	Column B
<input type="checkbox"/> Australian birth certificate.	<input type="checkbox"/> A document issued by the Commonwealth or a State or Territory within the preceding 12 months that records the provision of financial benefits to the individual and which contains the individual's name and residential address.
<input type="checkbox"/> Australian citizenship certificate.	<input type="checkbox"/> A document issued by the Australian Taxation Office within the preceding 12 months that records a debt payable by the individual to the Commonwealth (or by the Commonwealth to the individual), which contains the individual's name and residential address. Block out the TFN before scanning, copying or storing this document.
<input type="checkbox"/> Pension card issued by Department of Human Services.	<input type="checkbox"/> A document issued by a local government body or utilities provider within the preceding 3 months which records the provision of services to that address or to that person (the document must contain the individual's name and residential address).
	<input type="checkbox"/> If under the age of 18, a notice that: was issued to the individual by a school principal within the preceding 3 months; and contains the name and residential address; and records the period of time that the individual attended that school.

GROUP B – Companies

For Australian Registered Companies, provide one of the following (must clearly show the Company's full name, type (private or public) and ACN):

- ☐ A certified copy of the company's Certificate of Registration or incorporation issued by ASIC.
- ☐ A copy of information regarding the company's licence or other information held by the relevant Commonwealth, State or Territory regulatory body e.g. AFSL, RSE, ACL etc.
- ☐ A full company search issued in the previous 3 months or the company's last annual statement issued by ASIC.
- ☐ If the company is listed on an Australian securities exchange, provide details of the exchange and the ticker (issuer) code.
- ☐ If the company is a majority owned subsidiary of a company listed on an Australian securities exchange, provide details of the holding company name, its registration number e.g. ACN, the securities exchange and the ticker (issuer) code.

All of the above must clearly show the company's full name, its type (i.e. public or private) and the ACN issued by ASIC.

For Foreign Companies, provide one of the following:

- ☐ A certified copy of the company's Certificate of Registration or incorporation issued by the foreign jurisdiction(s) in which the company was incorporated, established or formed.
- ☐ A certified copy of the company's articles of association or constitution.
- ☐ A copy of a company search on the ASIC database or relevant foreign registration body.
- ☐ A copy of the last annual statement issued by the company regulator.

All of the above must clearly show the company's full name, its type (i.e. public or private) and the ARBN issued by ASIC, or the identification number issued to the company by the foreign regulator.

In addition, please provide verification documents for each beneficial owner or controlling person (senior managing official and shareholder) as listed under Group A.

A beneficial owner of a company is any person entitled (either directly or indirectly) to exercise 25% or more of the voting rights, including a power of veto, or who holds the position of senior managing official (or equivalent) and is thus the controlling person.

GROUP C – Trusts

For a Registered Managed Investment Scheme, Government Superannuation Fund or a trust registered with the Australian Charities and Not-for-Profit Commission (ACNC), or a regulated, complying Superannuation Fund, retirement or pension fund (including a self-managed super fund), provide one of the following:

- ☐ A copy of the company search of the relevant regulator's website e.g. APRA, ASIC or ATO.
- ☐ A copy or relevant extract of the legislation establishing the government superannuation fund sourced from a government website.
- ☐ A copy from the ACNC of information registered about the trust as a charity
- ☐ Annual report or audited financial statements.
- ☐ A certified copy of a notice issued by the ATO within the previous 12 months.
- ☐ A certified copy of an extract of the Trust Deed (i.e. cover page and signing page and first two pages that describes the trust, its purpose, appointer details and settlor details etc.)

For all other Unregulated trust (including a Foreign trust), provide the following:

- ☐ A certified copy of an extract of the Trust Deed (i.e. cover page and signing page and first two pages that describes the trust, its purpose, appointer details and settlor details etc.)

If the trustee is an individual, please also provide verification documents for one trustee as listed under Group A.

If the trustee is a company, please also provide verification documents for a company as listed under Group B.

GROUP D – Authorised Representatives and Agents

In addition to the above entity groups:

- ☐ If you are an **Individual Authorised Representative or Agent** – please also provide the identification documents listed under Group A.
- ☐ If you are a **Corporate Authorised Representative or Agent** – please also provide the identification documents listed under Group B.

All Authorised Representatives and Agents must also provide a certified copy of their authority to act for the investor e.g. the POA, guardianship order, Executor or Administrator of a deceased estate, authority granted to a bankruptcy trustee, authority granted to the State or Public Trustee etc.

SECTION 10 – GLOSSARY

Custodian – means a company that:

- a) is acting in the capacity of a trustee; and
- b) is providing a custodial or depository service of the kind described in item 46 of table 1 in subsection 6(2) of the Anti-Money Laundering and Counter-Terrorism Financing Act 2006 (AML/CTF Act); and
- c) either:
 - i. holds an Australian financial services licence authorising it to provide custodial or depository services under the Corporations Act 2001; or
 - ii. is exempt under the Corporations Act 2001 from the requirement to hold such a licence; and
- d) either:
 - i. satisfies one of the 'geographical link' tests in subsection 6(6) of the AML/CTF Act; or
 - ii. has certified in writing to the relevant reporting entity that its name and enrolment details are entered on the Reporting Entities Roll; and
- e) has certified in writing to the relevant reporting entity that it has carried out all applicable customer identification procedures and ongoing customer due diligence requirements in accordance with Chapter 15 of the AML/CTF Rules in relation to its underlying customers prior to, or at the time of, becoming a customer of the reporting entity.